

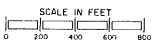


**1590 Winter St. NE**

north



(FOR THE ENTIRE NDP URBAN RENEWAL AREA)

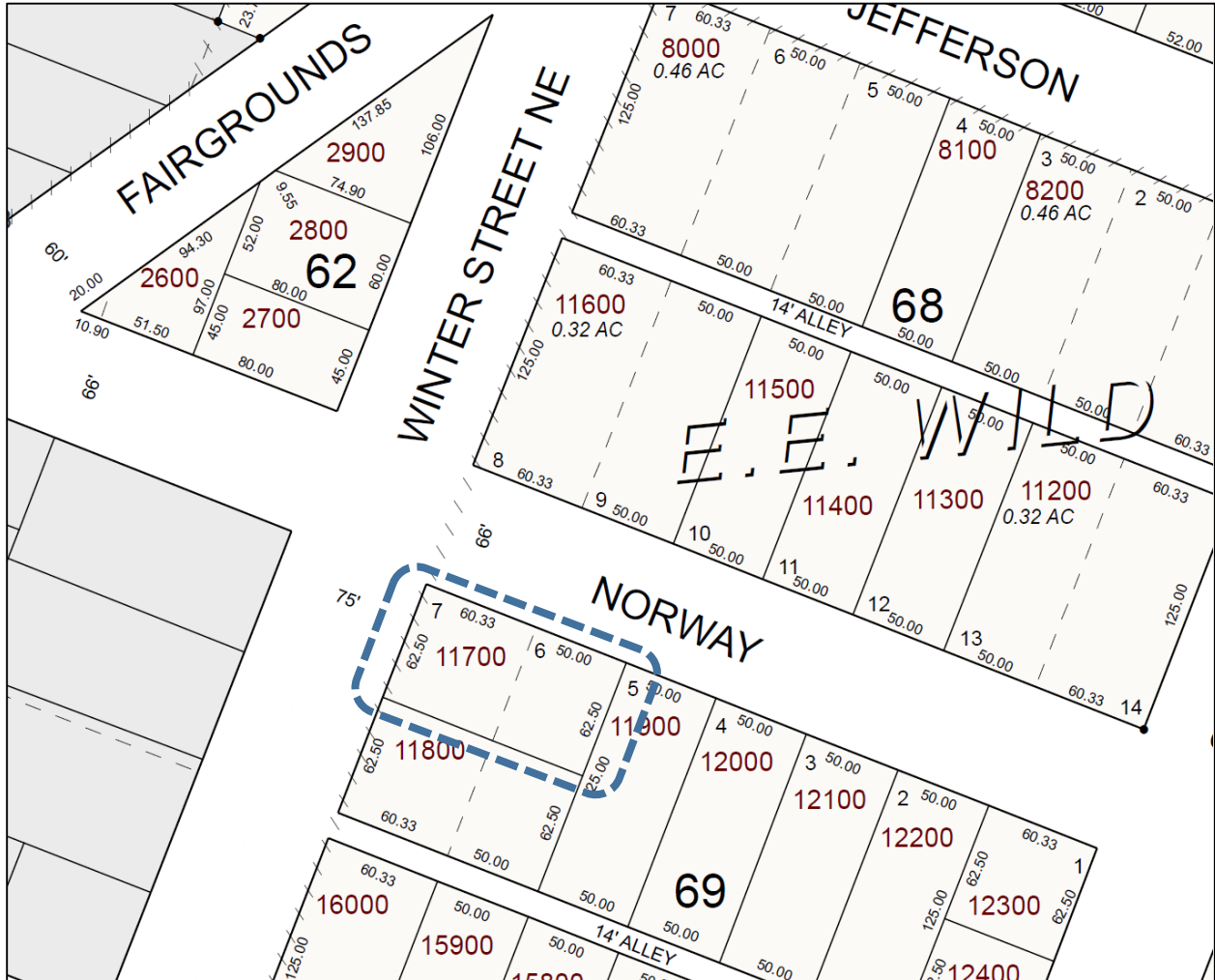


**n** NORTH  
**cp** SALEM

NDP BOUNDARY AND LAND USE PLAN MAP  
ORE. A-6  
(FOR THE ENTIRE NDP URBAN RENEWAL AREA)

NORTH SALEM NEIGHBORHOOD DEVELOPMENT PROGRAM  
URBAN RENEWAL AGENCY OF THE CITY OF SALEM, OREGON

Center for Hope and Safety Shelter Facility  
1590 Winter St. NE, Salem  
Tax Map Number 073W23BA Lot 11700



## Aerial Photo and Street View

