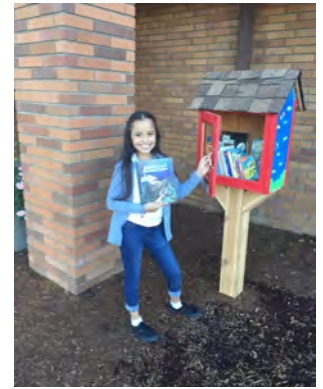


City of Salem Department of Community Development

CaPES

Community and Partners of East Salem **NEIGHBORHOOD PROFILE**

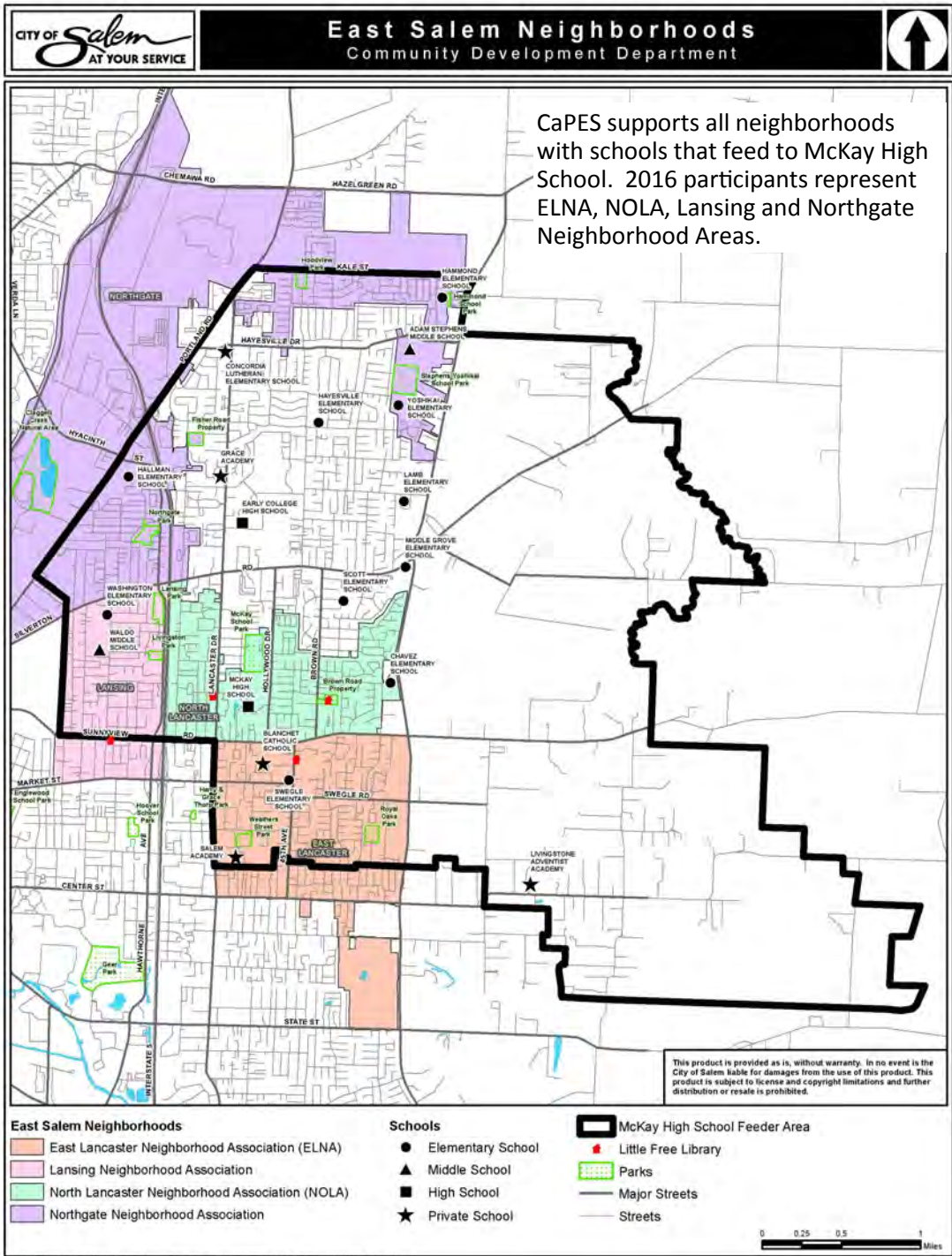


The Neighborhood Partnership Program
Assets and Indicators *December 2016*

Page Intentionally Left Blank

CAPEs COMMUNITY AND PARTNERS OF EAST SALEM

The Neighborhood Partnership (NP) Program is a collaborative process that engages stakeholders to work together to identify and address issues in specific neighborhood areas. Stakeholders include schools, churches, community groups, City of Salem and anyone interested in livability of the neighborhood area.



PROGRAM HISTORY

In 1997, in response to an increased need for social services in the South East Salem Neighborhood Association (SESNA) area, the City in conjunction with area stakeholders, formed a Steering Committee. Over the years, the structure has changed, but the Partnership Program still serves to solicit neighborhood input, guide the process, set goals and coordinate a variety of efforts to improve neighborhood livability.

In January 2011, the City restructured this program to a “Rotating Partnership” model giving it the flexibility to impact multiple areas of Salem within the existing budget. In addition, the new structure allows the City to reevaluate each year that support is going to neighborhood areas with a combination of the highest need and readiness.

EAST LANCASTER NEIGHBORHOOD AREA CHOSEN

Applications are scored based upon demonstrated neighborhood need, definable measurable goals for the NP and readiness of partners to work with the City in addressing those needs. The East Lancaster

Neighborhood Association (ELNA) Area was chosen as the first Rotating Partnership for January 2011 through December 2012. East Lancaster Neighborhood Area neighbors and partners organized an agenda-setting team, held regular monthly meetings and formed two project groups. The focus of one was to publicize Partnership Efforts and free resources and the other organized free activities for kids. A wide variety of community partners contributed countless hours and resources to the betterment of the area.



THE PARTNERSHIP EXPANDS TO THE NORTH

Partners from this group applied and were granted a second term of Partnership Support (2013-2014). Strengths of the group’s application included examples of the impressive community building work and excellent partnering they had demonstrated over the past two years as well as their goal of expanding their boundary. The group is open to supporting any neighborhoods with schools that feed to McKay High School. North Lancaster Neighborhood Association (NOLA) neighbors showed an immediate interest in being involved and received immediate support in

starting a new community garden in their previously undeveloped Brown Road Park. In 2013, CaPES also completed an operational document in order to move into a collaborative relationship with Salem Leadership Foundation increasing capacity to connect neighbors and strengthen East Salem Neighborhoods.

THE PARTNERSHIP EXPANDS TO INCLUDE THE EAST

Neighbors and partners in the Lansing Area formed their own Neighborhood Partnership in January 2012. The group reapplied for an additional two years of support from the City of Salem, but the Edgewater Neighborhood in West Salem ultimately received an overall higher score. While Lansing was not selected to continue receiving direct support from the City, many wanted to continue efforts to strengthen the Lansing neighborhood. Since CaPES is open to supporting all neighborhoods in the McKay High feeder area (which includes both Washington Elementary and Waldo Middle School in the Lansing Neighborhood), a number of Lansing partners ultimately decided to become involved in CaPES, forming a Lansing Action Team within that group that continues to be active in building community in the Lansing Area.

THE PARTNERSHIP EXPANDS FURTHER

Partners from this group applied and were granted a second term of Partnership Support (2015-2016). For their 3rd term the group added an objective to support the installation of Little Free Libraries. These small, cabinet sized libraries could go anywhere and everyone is encouraged to take or leave a book. None existed in East Salem and the group decided it was a great opportunity to support literacy and community shared space. CaPES put together some resources. Six have been installed and two more are in progress. In addition in 2015, some Northgate partners began participating in CaPES, forming a Northgate Action Team.

The total value of the increased civic activity and positive connections made due to Partnership efforts in the CaPES Area is incalculable. Benefits, which can extend beyond the boundary of the Partnership area, include tool development, community connections, lessons learned and projects that can be replicated in other neighborhoods.

Contents

The pages that follow outline Partnership efforts in this area over the last three years as well as indicators of community change for the ELNA, NOLA and Lansing Neighborhood Areas such as shifts in homeownership versus rental housing, changes in demographics, crime trends and park vandalism. The direct impact Partnership efforts have had on these indicators of community change is difficult to conclude.

Page 5: CaPES Roster
Page 7: Partnership Impact
Page 11: Demographics
Page 16: Civic Engagement
Page 17: Community Assets
Page 19: Crime Summary

CA PES (COMMUNITY AND PARTNERS OF EAST SALEM) DECEMBER 2016 ROSTER

As of December 2016, CaPES was made up of 172 neighbors and partners. Some attend regular monthly meetings and some prefer to receive information, but are often unable to attend meetings. Average meeting attendance in 2016 was 22 people.

Robert Acosta	Salem Police School Resource Officer
Amador Aguilar	Proyecto de Educacion Arte y Cultura Latina
Mario Aguilar	McKay Young Life
*Zyanya Aguilar-Nelson	Community Partnership Team Coordinator
Sterling Alexander	Neighbor, Immanuel Reformed Church
Teri Alexander	CCS Safe Families for Children
Wendy Anderson	McKay Teacher, Teen Action Team Advisor
Jess Armas	Exchange Club Child Abuse Prevention Center
Nancy Baldwin	Salem Health Community Health Education Ctr
Virginia Barker	Lansing Neighbor and Lansing Board
Melanie Barlow	Lancaster Family Health Center
Dale Basl	East Lancaster Neighbor and ELNA Board
Daniel Benjamin	North Lancaster Neighbor
Danette Beisley	Oak Park Community Church
Jaclyn Beker	Blanchet Catholic School
Garrett Berk	Campus Ambassadors
Sue Bloom	Boys and Girls Club Director
Erin Boers	Early Learning Hub
Jessica Brenden	Hallman Elementary Principal
Caroline Bridges	North Lancaster Neighbor and NoLa Board
Betsy Bristol	McKay Teacher, Teen Action Team Advisor
Ronnie Brooks	Pastor and McKay High School Aspire Program
Cara Brya	Scott Elementary PTC
Kyle Buse	Boys and Girls Club Athletics Director
Jan Calvin	Full Circle Consulting
Marlina Campos	East Salem Neighbor, Center for Hope & Safety
Odi Campos	Marion-Polk Oregon Child Development Coalition
Eric Cardella	Swegle Boys and Girls Club Director of Operations
Olga Casas	Chávez School Outreach Coordinator
Sara Casebeer	Scott Elementary Principal
Maureen Casey	Fostering Hope Project Director
Leslie Caudillo	Hallman Outreach Coordinator
Olga Cobb	Chávez Elementary Principal
Bryan Colbourne	City of Salem Planning
Jennifer Columbus	Start Making a Reader Today (SMART)
Robert Coronado	Roth's Fresh Markets
Dawn Cottrell	Marion County Health Services
Cecelia Craig	North Lancaster Neighbor and NoLa Board
Aileen Cutz	Merit Latino Micro Enterprise Program
Margaret Davis	East Lancaster Neighbor
Rosalba Diaz-Ruiz	Washington School Outreach Coordinator
Diana Dickey	Northgate Neighbor, Marion County Health
Ian Dixon-McDonald	Marion Polk Food Share VP of Programs
Lorn Dunn	Boys and Girls Club Teen Services

Sandra Echavarria	Salud Medical Center Program Coordinator
Jessica Estrada	Planned Parenthood
*Elisa Evert	Swegle Outreach Coord, CaPES Agenda Team
Corri Falardeau	Family Building Blocks Early Head Start
Neal Feldman	East Lancaster Neighbor
Steve Felton	East Lancaster Neighbor and ELNA Board
Nicole Fierro	Catholic Community Services
Iven Findley	East Salem Rotary Club
Sue Fowler	E Lancaster Neighbor, ELNA Co Chair, McKay CPT
Anayeli Franco	Salud Medical Center Nurse Supervisor
Janet Gabbard	New Hope Child Care Director
Carina Garibay	Fostering Hope Neighborhood Connector
Chelsea Gans	Swegle Boys and Girls Club
Megan Gapp	Family Building Blocks
Albertina Garcia	Adam Stephens Middle School Outreach Coord
Chenae Garcia	Legacy Health
Suzie Geisler	Blanchet Catholic School Student
Steve & Sarah Geisler	Blanchet Catholic School Parents
Shelley George	Little Caesar's Owner, NoLa Volunteer
Shirlene Gonzalez	North Lancaster Neighbor, NoLa Board
Julie Gregory	Oak Park Church Volunteer
Jose Guerrero	North Lancaster Neighbor, NoLa Board
Tony Guevara	Blanchet Catholic School President
Jose Gutierrez	Marion-Polk Food Share Program Coordinator
Josh Gwin	Marion-Polk Food Share Resource Coordinator
Karen Halvorson	Holy Cross Church
Amy Hammerstrom	Safe Families for Children
Michael Harrington	Calvary Chapel Church
Clark Hazlett	East Lancaster Neighbor and ELNA Board
Erica Heisler	Start Making a Reader Today Program
Matthew Henricksen	New Harvest Church, McKay Young Life
Adriana Hernandez	Scott Elementary School Outreach Coordinator
*Flora Hernandez	Community Action Energy Svs, CaPES Agenda Team
Levi Herrera-Lopez	Mano a Mano Family Center Executive Director
*Kaleb Herring	Salem Leadership, NoLa Board, CaPES Co-Chair
Kristine Herring	North Lancaster Neighbor
Lee Hettema	East Lancaster Neighbor
Sharon Heuer	Salem Health Director of Community Benefits
Jeff & Marty Heyen	Lansing Neighbors, CERT volunteers
Skye Hibbard	Salem Health Community Education Center
Jared Hibbard-Swanson	Marion-Polk Food Share Garden Coordinator
Greg Hicks	Oak Park Community Church

*Highlighted names indicate 2016 participants of the CaPES Leadership Team.

CAPEs (COMMUNITY AND PARTNERS OF EAST SALEM) DECEMBER 2016 ROSTER

CONTINUED FROM PAGE 5

Lisa Hoffert	McKay Parent
Mary Hollinger	E Salem Rotary, Blanchet Business Manager
Christopher Hupp	Options Counseling Services Director
Lizbeth Ibarra	McKay Student
Natalie Jasinski	Macaroni Kids Editor
Annette Jensen	Family Support Partner, Marion County
Michael Johnson	E Salem Suburban Neighborhood Association
Dell Johnson	Northgate Community Church Pastor
Susann Kaltwasser	E Lancaster Neighbor, ELNA Co Chair, McKay CPT
Teresa Kannasto	Oregon Child Development Coalition
Barbara Kessinger	MWVCAA Head Start
John King	East Salem Rotary
Eunice Kim	City of Salem Planner
Ann Krier	Planned Parenthood Education/Outreach Coord
Art Kuenzi	Suburban Garbage/E Lancaster Board
Maria Lemus	Mano a Mano Family Ctr/CCS Fostering Hope
Julie Lenhart	Scott Elementary PTC
Emily Loberg	Salem Bicycle Boulevards Advocate
David Lorenz	Goodwill Career Specialist
Surabhi Mahajan	Marion-Polk Food Share
*Carrie Maheu	Salem Leadership, CaPES Treasurer
Elizabeth Manzo	Oregon Child Development Coalition
Diana Marquez	McKay Teen Action Team Student
Kathy Martell	Delta Kappa Gamma/La Casita Library
Amy Martin	Scott Elementary Parent Teacher Club
Cody Mask	Northgate Common Life Missional Network
Matt McCarty	Swegle Boys and Girls Club Director
Stephanie Mentado	La Revelacion de Cristo
Marisol Mora	McKay Teen Action Team Student
Catherine Morgan	North Lancaster Neighbor
*Dwan Muller	Northgate Neighbor, NW Hub, CaPES Co-Chair
Shawnie Murphy	Salem-Keizer Head Start
Toni Nanneman	Blanchet Catholic School
Nhi Nguyen	McKay Student
Gae Nichols	Holy Cross Outreach
Brandy O'Bannon	Family Building Blocks
Dave Okada	City of Salem Police
Abel Orbistoudo	New Hope Church and Swegle Boys & Girls Club
Mary Ouellette	East Salem Rotary
Larrey Owens	Salem Police School Resource Officer
Sharma Owens	Swegle Parent, Early Head Start
Andrea Padilla	Oregon Child Development Coalition
Marti Palacios	Center for Hope and Safety
*Jennifer Palanuk	Calvary Chapel, CaPES Agenda Team
Yarina Perez	Legacy Health
Steve Poland	East Salem Rotary
William Posegate	Garten Recycling Services Manager/E Salem Rotary
Micah Powers	Salem Academy High School Principal

*Jessica Preis	Salem Neighborhood Partnership Coordinator
Griselda Puga	Marion Co Waste Reduction Coordinator
Jessica Ramey	Marion Co Waste Reduction Coordinator
Paola Ramirez	Mano a Mano Family Center
Kyle Raymond	Oregon Child Development Coalition
Esmeralda Rios	Fostering Hope Swegle Neighborhood Connector
Doug Rodgers	North Lancaster Neighbor, NoLa Co Chair
Brady Rogers	Salem Neighborhood Enhancement Administrator
Edgar Romero	Boys and Girls Club Branch Director
Ana Rueda	McKay Young Life Leader
Rhonda Rupe	Tierra Rose Activities Director
Don Russo	Northgate Neighbor, Northgate Board
Norma Sanchez	McKay CPT, Western Oregon University
Cristal Sandoval	Boys and Girls Club T3 Program
Hersh Sangster	Salem Bicycle Club
Maryann Sangster	Salem Bicycle Club
Lynette Seifeifert	North Lancaster Neighbor
Loran Sell	Holy Cross Lutheran lay coordinator
Roman Shapla	AC Gilbert Outreach/Educator
Laurie Shaw Casarez	City of Salem Youth Development Coordinator
Mike Sim	East Lancaster Neighbor, ELNA Board
Sam Skillern	Salem Leadership Foundation Director
Dorothy Stanton	McKay High School Outreach Coordinator
Dave Steiner	East Lancaster Neighbor, ELNA Board
Lexi Stickel	Marion-Polk Food Share
Lisa Shreeve	McKay High School Teacher
Howard Smith	Swegle Boys and Girls Club T3 Coordinator
Patty Tipton	Lansing Neighbor & Neighborhood Chair
Deborah Topp	Salem Natural Resources Outreach Specialist
Anthony Trask	Fellowship Church Pastor
Arturo Vargas	United Way Community Engagement & Impact
Rose Walker	City of Salem Neighborhood Counselor
Steve Walsh	North Lancaster Neighbor, NoLa Co Chair
James Weber	McKay Teacher, Coach
Jim Welsh	City of Salem Crime Prevention Sergeant
Suzanne West	Swegle Elementary Principal
Kaileigh Westermann	Just Walk Salem Keizer Coordinator
Crystal Williams	Northgate Neighbor
Dennis Will	North Lancaster Neighbor, NoLa Board

*Highlighted names indicate 2016 participants of the CaPES Leadership Team.

2013 Community and Partners of East Salem Impact

Mission, Goals and Actions Summary for 2013

VISION Connected, Supported, Cherished Neighborhoods within the McKay Community

MISSION 1) Facilitate community connections; 2) support children and families and; 3) promote a clean, safe environment in neighborhoods with schools that feed to McKay High School.

Community Connections

- Reapplied and selected for additional two years of City Partnership support based, in part, on goal of expanding boundary to include more East Salem neighbors.
- Changed name to CaPES (Community and Partners of East Salem) to reflect greater area of engagement.
- Entered into a Community Partnership Team collaboration with Salem Leadership Foundation to expand capacity to support East Salem Neighbors.
- Grew membership from six original partners in January 2011 to 91 partners by December 2013.
- Held 12 CaPES meetings and numerous project meetings.
- Developed quarterly Area Free Resource Lists and distributed through partners and at events.
- Recognition from Blanchet Catholic School honoring the City of Salem including "... the City's support of a Partnership Program which has greatly improved the quality of life of the East Lancaster Neighborhood."
- Partners recognized at a Swegle School Spring Volunteer Lunch, two neighbors honored at City's August Volunteer Recognition event for their work at Brown Road Garden.

Support to Children and Families

- Supported weekly community dinners hosted by various CaPES partners (6,965 total meals served in 2013).
- September 28, despite record breaking wind and rain, 300 people enjoyed games, crafts, face painting and lunch at the Swegle Boys & Girls Club (\$9,325 leveraged).
- Supported annual McKay Food Drive which provided 30 food boxes to families in the McKay and Waldo areas.
- Annual Holiday Party was cancelled due to snow, but partners still made sure gifts, books, food, trees, crafts and warm clothing were given to East Salem families (\$4,090 leveraged).
- Located free storage spaces, collected toys and recruited volunteers when the Police Department was no longer able to take the coordination lead in their annual toy drive.
- Supported various partners in providing free after school soccer program at Swegle, Scott, Chavez and Auburn and soccer tournaments in June, October and November.

Clean, Safe Environment

- Supported NOLA neighbors and partners in transforming their previously undeveloped City Park into Brown Road Community Garden. Three work parties and a variety of other garden activities took place in 2013 (\$15,332 leveraged).
- April 20, 60 volunteers cleaned up the garden site, built raised beds, hosted activities for kids and connected.
 - June 8, 31 volunteers placed and filled raised beds.
 - October 5, 19 volunteers laid bark and straw and constructed a composting center.

Leveraged Contributions Summary for 2013

COMMUNITY CONTRIBUTIONS				
Time Period	Volunteer Hours	In-Kind Hours	In-Kind Donations	Total est. value (including volunteer hours, in-kind hours and donations)
Jan to March 2013	34.5 hrs \$752	48 hrs \$1,200	\$8,066	\$10,018
April to June 2013	249 hrs \$5,427	117 hrs \$2,925	\$13,899	\$22,251
1 st 6 mo TOTAL	283.5 hrs \$6,179	165 hrs \$4,125	\$21,965	\$32,269
July to Sept 2013	202.5 hrs \$4,483	205.5 hrs \$5,814	\$4,679	\$14,976
Oct to Dec 2013	434 hrs \$9,609	250 hrs \$7,073	\$12,214	\$28,896
2 nd 6 mo TOTAL	636.5 hrs \$14,092	455.5 hrs \$12,887	\$16,893	\$43,872
TOTAL 2013	920 hrs \$20,271	620.5 hrs \$17,012	\$38,858	\$76,141

CITY OF SALEM CONTRIBUTIONS
The City of Salem budgeted \$2,800 for the Community and Partners of East Salem in 2013 (\$1,400 for each 6 month period) to spend on improving neighborhood livability in accordance with the groups' goals. The money was spent on printing, supplies and food for various projects.
City Staff time is spent on Community and Partners of East Salem Partnership Program efforts, including Police and Fire attendance at community meetings and events. This is in addition to the Partnership Program Coordinator's work.
January to March 2013, 0 hours April to June 2013, 0 hours July to September 2013, 14 hours October to December 2013, 2 hours TOTAL 2013, 16 hrs

2014 Community and Partners of East Salem Impact

Mission, Goals and Actions Summary for 2014

VISION Connected, Supported, Cherished
Neighborhoods within the McKay Community

MISSION 1) Facilitate community connections;
2) support children and families and; 3) promote a safe,
healthy, clean environment in neighborhoods with
schools that feed to McKay High School

Community Connections

- Continued Community Partnership Team collaboration with Salem Leadership Foundation (includes North Neighbors and South Salem Connect) expanding capacity to support East Salem neighbors.
- Grew membership to 103 partners by December 2014.
- Held 11 CaPES meetings and numerous project meetings.
- Continued updating and sharing Free Resource Lists.
- Supported weekly La Casita coffee hours, an opportunity for neighbors to connect and share resources.
- Provided resource information and prizes at the 31st Annual McKay Community Breakfast.
- Shared East Salem information and opportunities with attendees at Family Building Blocks Family Fest in August and Salem Sunday Streets in September.

Support to Children and Families

- Supported weekly community dinners hosted by various CaPES partners (6,372 total meals served in 2014).
- Provided support to Swegle, Scott, Chavez and Washington Elementary School Literacy Nights, Teacher Appreciation, Back to School Events and Holiday Parties, as well as Outdoor School supplies, a Chess Tournament, food baskets and extra clothing.
- Supported a Family Building Blocks Carousel Family Night in June.
- Supported soccer tournaments and gave away books for free after school soccer program participants at 5 elementary schools.
- Organized 4th annual September Day of Play where 600 people enjoyed games, crafts, face painting and lunch.
- In October began supporting a neighbor organized aerobics group and an open gym time for youth.
- Provided childcare stipends for Parent Support Group for parents of children with special needs.
- Provided scholarships for McKay students to attend a youth summit.
- Supported annual McKay Food Drive which provided 45 food boxes to families in the McKay area (15 more than last year).
- Supported December Holiday Party for La Casita families.
- Located free storage spaces, collected toys and recruited volunteers for the Police Department's annual toy drive serving 186 families (406 children).

Safe, Healthy, Clean Environment

- Continued support to Brown Rd Garden, a previously undeveloped City Park transformed by neighbors, with funding, publicity, and support to clean up efforts and at least four work parties.
- Supported Swegle School when Blanchet students chose them for a beautification project in May
- Supported two National Night Out Parties in August: Lansing Neighborhood's in partnership with Red Lion and NOLA's at Brown Road Garden and Park.

Leveraged Contributions Summary for 2014

COMMUNITY CONTRIBUTIONS				
Time Period	Volunteer Hours	In-Kind Hours	In-Kind Donations	Total est. value (including volunteer hours, in-kind hours and donations)
Jan to March 2014	152 hrs \$3,367	187 hrs \$5,291	\$10,075	\$18,733
April to June 2014	438 hrs \$9,698	239 hrs \$6,762	\$14,422	\$30,882
1 st 6 mo TOTAL	590 hrs \$13,065	426 hrs \$12,053	\$24,497	\$49,615
July to Sept 2014	803 hrs \$18,108	398 hrs \$11,427	\$12,222	\$41,757
Oct to Dec 2014	722 hrs \$16,282	321 hrs \$9,214	\$36,016	\$61,512
2 nd 6 mo TOTAL	1,525 hrs \$34,390	719 hrs \$20,641	\$48,238	\$103,269
TOTAL 2014	2,115 hrs \$47,455	1,145 hrs \$32,694	\$72,735	\$152,884

CITY OF SALEM CONTRIBUTIONS
The City of Salem budgeted \$2,800 for the Community and Partners of East Salem in 2014 (\$1,400 for each 6 month period) to spend on improving neighborhood livability in accordance with the groups' goals. The money was spent on printing, supplies and food for various projects.
City Staff time is spent on Community and Partners of East Salem Partnership Program efforts, including Police and Fire attendance at community meetings and events. This is in addition to the Partnership Program Coordinator's work.
January to March 2014, 0 hours
April to June 2014, 2 hours
July to September 2014, 17 hours
October to December 2014, 6 hours
TOTAL 2014, 25 hrs

2015 Community and Partners of East Salem Impact

Mission, Goals and Actions Summary for 2015

VISION Connected, Supported, Cherished Neighborhoods within the McKay Community

MISSION 1) Facilitate community connections; 2) support children and families and; 3) promote a safe, healthy, clean environment in neighborhoods with schools that feed to McKay High School

Community Connections

- Continued collaboration with Salem Leadership Foundation and Community Partnership Teams, North Neighbors and South Salem Connect.
- Grew membership to 150 partners by December 2015.
- Held 12 CaPES meetings and numerous project meetings.
- Continued updating and sharing Free Resource Lists and developed Little Free Library outreach materials.
- Supported weekly La Casita coffee hours, an opportunity for neighbors to connect and share resources.
- Shared East Salem information and opportunities with attendees at February Annual McKay Community Breakfast, August Family Building Blocks Family Fest and September Salem Sunday Streets.
- Purchased CaPES and Soccer Program vinyl banners.
- Supported three weekly walking groups in East Salem Neighborhoods.

Support to Children and Families

- Supported weekly community dinners hosted by various CaPES partners (1,265 total meals served in 2015).
- Provided support to Swegle, Scott, Chávez, Washington & Hallman Elementary School literacy nights, teacher appreciation, back to school events, holiday parties, parenting classes, a summer reading program, 40 food baskets and dance costume materials.
- Supported six soccer tournaments for free after school soccer program at five East Salem schools and a soccer camp at a church.
- Continued supporting a neighbor organized aerobics group (met 67 times in 2015) and weekly open gym time for youth (45 times).
- Supported April Day of the Child Celebration for La Casita families.
- Organized 1st annual Bike Rodeo in June at Chávez Elementary. 213 people enjoyed snacks, safety info, activities and giveaways.
- Supported a Family Building Blocks Carousel Family Night in June.
- Organized 5th annual September Day of Play where 450 people enjoyed games, crafts, face painting and lunch at Swegle School.
- Supported October open house and Little Free Library ribbon cutting at the new La Placita Community Gathering Space.
- Supported November McKay Food Drive providing 40 food boxes.
- Located free storage, collected toys and recruited volunteers for the Salem Police annual toy drive serving 199 families (433 kids).
- Installed four Little Free Libraries in East Salem.
- Gave away over 1,800 used books and 587 new ones through Little Free Libraries, community events and preschool programs.

Safe, Healthy, Clean Environment

- Continued support to Brown Road Garden, a previously undeveloped City Park transformed by neighbors, with funding, publicity, clean up efforts, at least six work parties and installation of a Little Free Library and information kiosk.
- Supported National Night Out Parties at Livingston Park in Lansing and Brown Road Garden and Park in North Lancaster.

Leveraged Contributions Summary for 2015

COMMUNITY CONTRIBUTIONS				
Time Period	Volunteer Hours	In-Kind Hours	In-Kind Donations	Total est. value (including volunteer hours, in-kind hours and donations)
Jan to March 2015	337 hrs \$7,600	267 hrs \$7,666	\$10,079	\$25,345
April to June 2015	992 hrs \$21,965	666 hrs \$19,121	\$13,071	\$54,157
1 st 6 mo TOTAL	1,329 hrs \$29,565	933 hrs \$26,787	\$23,150	\$79,502
July to Sept 2015	515 hrs \$11,881	505 hrs \$14,746	\$16,010	\$42,637
Oct to Dec 2015	919 hrs \$21,202	458 hrs \$13,374	\$28,054	\$62,630
2 nd 6 mo TOTAL	1,434 hrs \$33,083	963 hrs \$28,120	\$44,064	\$105,267
TOTAL 2015	2,763 hrs \$62,648	1,896 hrs \$54,907	\$67,214	\$184,769

CITY OF SALEM CONTRIBUTIONS
The City of Salem budgeted \$2,800 for the Community and Partners of East Salem in 2015 (\$1,400 for each 6 month period) to spend on improving neighborhood livability in accordance with the groups' goals. The money was spent on printing, supplies and food for various projects.
City Staff time is spent on Community and Partners of East Salem Partnership Program efforts, including Police and Fire attendance at community meetings and events. This is in addition to the Partnership Program Coordinator's work.
January to March 2015 1 hour
April to June 2015, 20 hours
July to September 2015, 20 hours
October to December 2015, 2 hours
TOTAL 2015, 43 hrs

2016 Community and Partners of East Salem Impact

Mission, Goals and Actions Summary for 2016

VISION Connected, Supported, Cherished Neighborhoods within the McKay Community

MISSION 1) Facilitate community connections; 2) support children and families and; 3) promote a safe, healthy, clean environment in neighborhoods with schools that feed to McKay High School

Community Connections

- Grew membership to 172 partners by Dec. 2016.
- Held 11 CaPES meetings, numerous project meetings.
- Continued collaboration with Salem Leadership Foundation and Community Partnership Teams, North Neighbors and South Salem Connect.
- Continued updating/sharing Free Resource Lists and Little Free Library outreach materials.
- Supported 49 weekly La Casita coffee hours, an opportunity for neighbors to connect and share resources, plus 8 park potlucks and work parties.
- Shared East Salem information/opportunities with attendees at February Annual McKay Community Breakfast and other community events.
- Supported 3 weekly East Salem walking groups.

Safe, Healthy, Clean Environment

- Continued support to Brown Road Garden, a previously undeveloped City Park, with funding, publicity, clean up efforts, at least six volunteer work parties and numerous site improvements.
- Continued supporting La Casita neighbor-organized aerobics group (66 classes) and helped form new group at La Placita.
- Supported National Night Out Parties at Lansing Park, Devonshire Court in North Lancaster and Northgate Park.
- In August, "Park Rangers" offered free fun games and healthy activities, snacks and nutritional information at three East Salem Parks for an hour at each park each day.
- Participated in Hallman Community Meetings and "Cafecitos," projects group to support a safe neighborhood for students.

Support to Children and Families

- Installed Little Free Libraries at Oak Park Community and First Free Methodist Churches. Continued supporting four installed last year.
- Organized 2nd annual Bike Rodeo in May at Scott Elementary. 600 people enjoyed snacks, safety info, activities and giveaways.
- Collaborated to host Garden Camps at the La Placita and La Casita Children's Teaching Gardens in July ending with a family field day.
- Supported "Park Rangers" in offering free activities, healthy snacks and positive role models at East Salem Parks (3) in August.
- Organized 6th annual September Day of Play where at least 600 people enjoyed games, activities and dinner at Swegle School.
- Supported November McKay Food Drive providing 50 food boxes.
- Provided support to East Salem Family/Activity and Education Nights (5) and Holiday Parties (3).
- Located free storage, collected toys and recruited volunteers for the Salem Police annual toy drive serving 259 families (669 kids).
- Supported soccer tournaments (5) for free, volunteer-led GRASSP (grass roots afterschool soccer program) and volunteer training. GRASSP inspired similar basketball program at Swegle.
- Supported weekly open gym time for youth (40 sessions).
- Helped fund educational opportunities: Seed to Supper series (2), Strengthening Families series (1) and McKay Youth participation in CAREcorps service learning camp and ILEAD leadership training.

Leveraged Contributions Summary for 2016

COMMUNITY CONTRIBUTIONS

Time Period	Volunteer Hours	In-Kind Hours	In-Kind Donations	Total est. value (including volunteer hours, in-kind hours and donations)
Jan to March 2016	371 hrs \$8,559	323 hrs \$79,432	\$15,750	\$33,741
April to June 2016	736 hrs \$16,979	422 hrs \$12,323	\$13,021	\$42,323
1 st 6 month TOTAL	1,107 hrs \$25,538	745 hrs \$21,755	\$28,771	\$76,064
July to Sept 2016	764 hrs \$17,999	623 hrs \$18,192	\$17,402	\$53,595
Oct to Dec 2016	1,082 hrs \$25,494	603 hrs \$17,607	\$35,662	\$78,763
2 nd 6 month TOTAL	1,846 hrs \$43,493	1,226 hrs \$35,799	\$53,064	\$132,356
TOTAL 2016	2,953 hrs \$69,031	1,971 hrs \$57,554	\$81,835	\$208,420

CITY OF SALEM CONTRIBUTIONS

The City of Salem budgeted \$2,800 for the Community and Partners of East Salem in 2016 (\$1,400 for each 6 month period) to spend on improving neighborhood livability in accordance with the groups' goals. The money was spent on printing, supplies and food for various projects.

City Staff time is spent on Community and Partners of East Salem Partnership Program efforts, including Police and Fire attendance at community meetings and events. This is in addition to the Partnership Program Coordinator's work.

January to March 2016, 0 hours

April to June 2016, 30 hours

July to September 2016, 4 hours

October to December 2016, 2 hours

TOTAL 2015, 36 hours

EAST SALEM DEMOGRAPHICS

2010 Census Summary Profile		East Lancaster Neighborhood	North Lancaster Neighborhood	Lansing Neighborhood	Salem
Age	Population under age 18	31.1%	30%	32.4%	25%
	Population over age 65	12.2%	9.5%	8.1%	12.1%
	Median Age	31.3 years	30.1 years	30.5 years	34.9 years
Housing	Total Occupied Housing Units	94.8%	94.9%	93.3%	93.5%
	Owner Occupied	52.4%	54.3%	59.4%	56.2%
	Average Household Size, owner occupied	2.87	2.94	3.17	2.6
	Renter Occupied	47.6%	45.7%	40.6%	43.8%
	Average Household Size, renter occupied	2.78	3.15	3.17	2.49
Household	Total Number of Households	3,253	2,089	1,399	57,241
	Households with one person	24.4%	19.6%	20.5%	28.7%
	Households with two or more people	75.6%	80.4%	79.5%	71.3%
	Family Households	68.5%	72.1%	72.2%	63.4%
	All Households with Children	42.1%	43.9%	46.2%	33.5%
	Multigenerational Households	5.1%	6.0%	7.9%	3.4%
	Average Household Size	2.83	3.03	3.17%	2.55
	Average Family Size	3.38	3.49	3.65%	3.15
Income by Household 2012 estimates	< \$15,000	14.7%	12.3%	15.8%	12.8%
	\$15,000 to \$24,999	15.3%	14.2%	16.4%	14.2%
	\$25,000 to \$34,999	14.2%	13.1%	15.4%	12.7%
	\$35,000 to \$49,999	15.1%	21.0%	15.2%	15.4%
	\$50,000 to \$74,999	28.0%	20.8%	18.1%	19.5%
	\$75,000 to \$99,999	9.1%	10.5%	6.1%	11.0%
	\$100,000 to \$149,999	2.3%	7.8%	10.9%	10.3%
	\$150,000 to \$199,999	.1%	0.3%	0.7%	2.3%
	\$200,000 +	1.1%	0.1%	1.3%	1.9%
	Median Household Income	\$39,562	\$41,069	\$36,771	\$43,985
	Average Household Income	\$46,028	\$49,341	\$50,290	\$57,354
	Per Capita Income	\$15,944	\$16,398	\$15,948	\$22,964

Data was compiled using Environmental Systems Research Institute (Esri) Community Analyst (www.esri.com/ca) with current City of Salem Neighborhood Association boundaries and City boundaries as of April 1, 2010.

Source: U.S. Census Bureau, Census 2010 Summary File 1. Esri converted Census 2000 data into 2010 geography.

Data Notes: Households with children include any households with people under age 18, related or not. Multigenerational households are families with 3 or more parent-child relationships. Multigenerational households are reported only to the tract level. Esri estimated block group data, which is used to estimate polygons or non-standard geography. Average family size excludes nonrelatives. Income is expressed in current dollars.

EAST SALEM DEMOGRAPHICS

2016 HOUSEHOLDS BY LAND USE PLACETYPES	Single Family Residence	Duplex, Triplex Residence	Apartment Residence	Mobile Home Park Residence	Retirement Residence	Other Residence	Total Residences
East Lancaster	1,694	74	869	428	270	43	3,378
North Lancaster	1,201	140	555	261	0	77	2,234
Lansing	1,142	134	306	38	56	18	1,694

Data derived by City of Salem using Geographic Information (GIS) software and sorting the data by associated Placetypes by neighborhood with the most current information available.

RESIDENTIAL AVERAGE SALES PRICE	2011	2012	2013	2014	2015	2016
East Lancaster Neighborhood	\$109,343	\$205,000	\$117,932	\$99,818	\$102,900	\$80,896
North Lancaster Neighborhood	\$104,323	\$111,791	\$136,012	\$114,606	\$144,966	\$73,739
Lansing Neighborhood	\$98,628	\$91,115	\$120,215	\$110,295	\$143,187	\$136,520
Average (all Salem Neighborhoods in Marion County)	\$155,232	\$156,503	\$168,066	\$163,411	\$224,699	\$264,651

Data derived from Marion County Assessor's office sales records.

POPULATION BY RACE, 2010	ELNA	NOLA	Lansing	Salem
Total Population	9,412	6,410	4,499	154,569
- Population Reporting One Race	95.6%	95.3%	95.1%	95.7%
White	66.2%	62.9%	64.6%	79.3%
Black or African American	.9%	1.2%	1.6%	1.5%
American Indian/Alaska Native	1.7%	2.1%	1.8%	1.5%
Asian	3.8%	4.7%	1.8%	2.6%
Hawaiian/Pacific Islander	1.7%	2.7%	1.6%	1%
Some Other Race	21.4%	21.7%	23.8%	10%
- Population Reporting Two + Races	4.4%	4.7%	4.9%	4.3%
Total Hispanic Population	39.4%	38.8%	44.3%	20.1%

Data was compiled using Environmental Systems Research Institute (Esri) Community Analyst (www.esri.com/ca) with current City of Salem Neighborhood Assoc. boundaries and City boundaries as of April 1, 2010. Source: U.S. Census Bureau, Census 2010 Summary File 1. Esri converted Census 2000 data into 2010 geography. Data Notes: Hispanic population can be of any race.

Salem-Keizer Student DEMOGRAPHICS FOR EAST SALEM

STUDENT ETHNICITY

Data from Oregon Department of Education

Chávez Elementary	11/12	12/13	13/14	14/15	15/16
Indian/Alaskan		.9%	1%	.5%	.5%
Black		.6%	.3%	.2%	.3%
White		28.6%	25.1%	25.3%	31.5%
Hispanic		64.4%	64.1%	64.1%	58.6%
Asian/Pacific		5.9%	6.4%	7.1%	5.8%
Multi Racial		2.3%	3.1%	2.9%	3.2%

Hallman Elementary	11/12	12/13	13/14	14/15	15/16
Indian/Alaskan	.4%	.7%	.9%	.7%	.7%
Black	1.9%	1.5%	1.6%	1.3%	1.8%
White	11.4%	14.5%	12.2%	12.4%	25.8%
Hispanic	82.2%	79.4%	80.7%	80.4%	67.1%
Asian/Pacific	2.2%	2%	1.8%	2.2%	1.8%
Multi Racial	1.9%	2%	2.8%	3.1%	2.8%

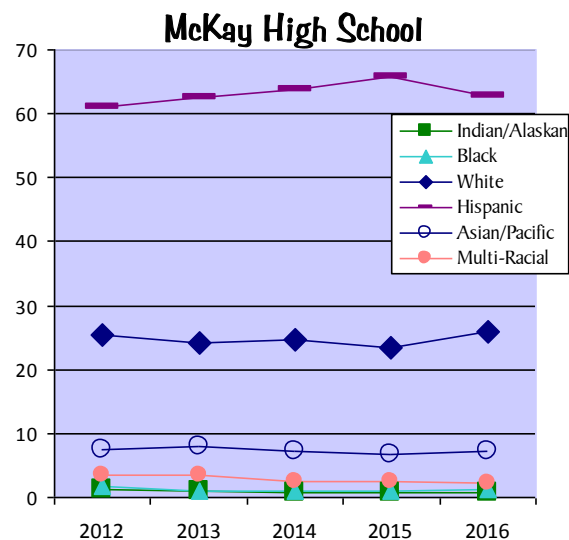
Scott Elementary	12/13	13/14	14/15	15/16	15/16
Indian/Alaskan	1.5%	.9%	1%	.8%	.8%
Black	1.7%	1.5%	.6%	.3%	.3%
White	30%	27.1%	23.8%	26.6%	26.6%
Hispanic	60.3%	64.1%	68.1%	65.1%	65.1%
Asian/Pacific	5.1%	4.8%	4.8%	5.4%	5.4%
Multi Racial	1.5%	1.7%	1.8%	1.7%	1.7%

Swegle Elementary	11/12	12/13	13/14	14/15	15/16
Indian/Alaskan	2.8%	1.7%	1.3%	1.1%	1%
Black	.3%	.4%	.2%	.6%	0%
White	24%	24.1%	26.4%	26.2%	31.1%
Hispanic	61.6%	61.7%	62.1%	61%	57.2%
Asian/Pacific	7.9%	9.2%	7.1%	7.3%	7.2%
Multi Racial	3.5%	2.9%	2.8%	3.8%	3.4%

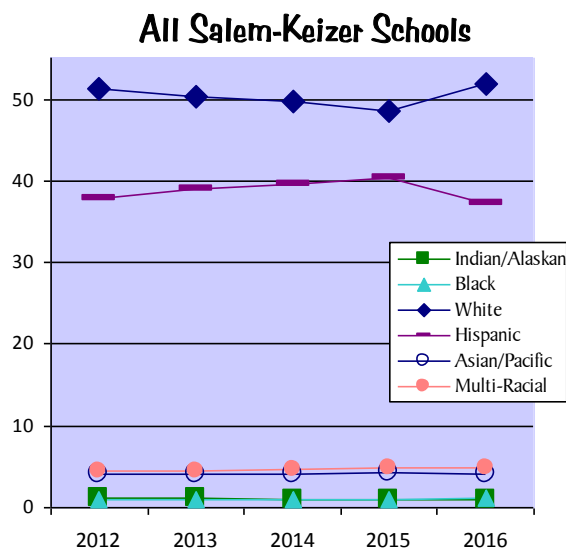
Washington Elementary	11/12	12/13	13/14	14/15	15/16
Indian/Alaskan	.5%	0%	.5%	.2%	.2%
Black	.7%	1.2%	1.6%	2.7%	2.9%
White	18%	15.7%	17.2%	20.6%	19.1%
Hispanic	73.2%	76%	73.1%	72%	73.4%
Asian/Pacific	5.6%	4.9%	4.8%	2.9%	2.9%
Multi Racial	2.1%	2.2%	2.9%	1.6%	1.5%

Waldo Middle School	11/12	12/13	13/14	14/15	15/16
Indian/Alaskan	.7%	.8%	.8%	.7%	.2%
Black	.9%	1.2%	17%	1.8%	2.9%
White	22.1%	20.8%	21.4%	20.1%	19.1%
Hispanic	69.2%	68%	68.3%	67.8%	73.4%
Asian/Pacific	5.9%	7.5%	6.7%	7.1%	2.9%
Multi Racial	1.3%	1.8%	2.3%	2.5%	1.5%

McKay High School	11/12	12/13	13/14	14/15	15/16
Indian/Alaskan	1.2%	.9%	.8%	.8%	.7%
Black	1.8%	1%	1%	.9%	1.2%
White	25.3%	24.2%	24.7%	23.4%	25.9%
Hispanic	61%	62.6%	63.7%	65.8%	62.9%
Asian/Pacific	7.4%	7.9%	7.1%	6.7%	7.2%
Multi Racial	3.4%	3.5%	2.6%	2.4%	2.2%



All Salem-Keizer Schools	11/12	12/13	13/14	14/15	15/16
Indian/Alaskan	1.2%	1.1%	1%	1%	1%
Black	1%	.9%	1%	1%	1.1%
White	51.3%	50.4%	49.8%	48.6%	51.9%
Hispanic	37.9%	39%	39.6%	40.3%	37.2%
Asian/Pacific	4.1%	4.1%	4%	4.2%	4.1%
Multi Racial	4.5%	4.5%	4.6%	4.9%	4.8%

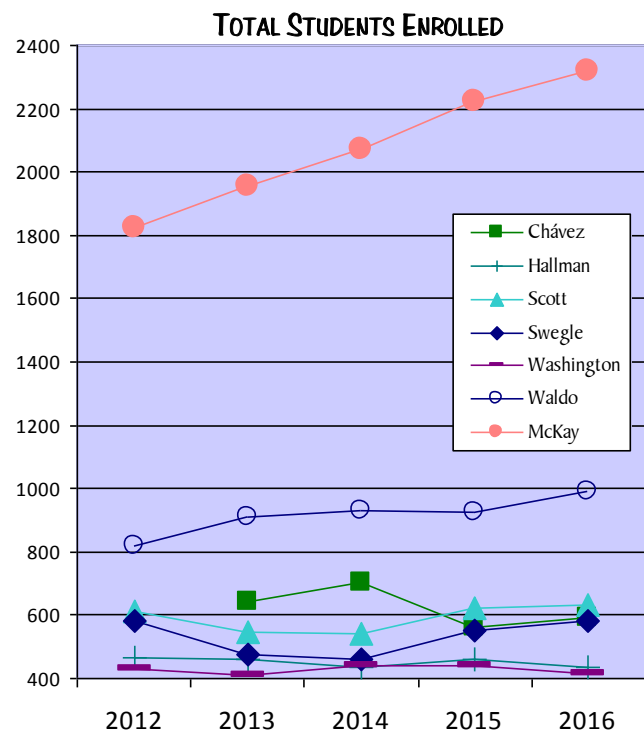


Salem-Keizer Student DEMOGRAPHICS FOR EAST SALEM

TOTAL STUDENTS ENROLLED

school	2011/12	2012/13	2013/014	2014/015	2015/016
Chávez Elementary	N/A	641	705	562	590
Hallman Elementary	466	461	434	459	435
Scott Elementary	612	546	543	623	631
Swegle Elementary	580	478	462	549	582
Washington Elementary	429	408	442	442	414
Waldo MS	820	909	929	926	993
McKay HS	1,824	1,957	2,072	2,225	2,317

Data from Oregon Department of Education.



STUDENT ATTENDANCE RATE PER SCHOOL YEAR

	11/12	12/13	13/14	14/15	15/16
Chávez Elementary	N/A	94%	94%	94%	94%
Hallman Elementary	92%	93%	94%	93%	93%
Scott Elementary	93%	95%	95%	92%	93%
Swegle Elementary	94%	94%	94%	93%	93%
Washington Elementary	94%	93%	93%	93%	94%
All Salem-Keizer Elementary	94%	94%	94%	94%	94%
Waldo Middle	93%	93%	93%	92%	93%
All Salem-Keizer Middle	93%	94%	94%	93%	92%
McKay High	90%	90%	91%	89%	84%
All Salem-Keizer High	91%	91%	91%	91%	85%

Data from Salem-Keizer School District Testing Department based on June 30 Attendance Report.

STUDENT STABILITY RATE PER SCHOOL YEAR

	11/12	12/13	13/14	14/15	15/16
Chávez Elementary School	N/A	91%	87%	87%	87%
Hallman Elementary School	83%	81%	81%	85%	83%
Scott Elementary School	88%	85%	84%	87%	83%
Swegle Elementary School	84%	82%	87%	82%	86%
Washington Elementary School	86%	82%	83%	85%	85%
All Salem-Keizer Elementary	88%	89%	89%	89%	90%
Waldo Middle School	85%	86%	86%	84%	86%
All Salem-Keizer Middle Schools	89%	89%	90%	89%	90%
McKay High School	80%	81%	78%	76%	82%
All Salem-Keizer High Schools	83%	83%	90%	80%	83%

Data from Salem-Keizer School District Testing Department. Data is based on October 1 enrollment. Percentage of students that maintained their enrollment the entire school year.

STUDENTS ABLE TO SPEAK ENGLISH WELL

	11/12	12/13	13/14	14/15	15/16
Chávez Elementary	Not Applicable	47%	45%	48%	54%
Hallman Elementary	Not Available		31%	38%	41%
Scott Elementary	53%	47%	47%	43%	49%
Swegle Elementary	48%	46%	48%	49%	59%
Washington Elementary	39%	42%	44%	43%	51%
All Salem-Keizer Elementary	70%	71%	54%	70%	73%
Waldo Middle	80%	84%	83%	78%	75%
All Salem-Keizer Middle	87%	89%	89%	91%	92%
McKay High	89%	91%	93%	92%	84%
All Salem-Keizer High	93%	94%	95%	96%	91%

Percentage of students able to speak English well was calculated from the number of students who are not classified as English Language Learners. Data from Salem-Keizer School District Testing Department, based on June enrollment.

Salem-Keizer Student DEMOGRAPHICS FOR EAST SALEM

REDUCED LUNCH	11/12	12/13	13/14	14/15	15/16
Chávez Elementary	N/A	4%	4%	0%	0%
Hallman Elementary	4%	5%	5%	0%	0%
Scott Elementary	9%	8%	8%	0%	0%
Swegle Elementary	9%	10%	10%	0%	0%
Washington Elementary	7%	7%	7%	0%	0%
All Salem-Keizer Elementary	6%	6%	6%	3%	3%
Waldo Middle School	10%	10%	10%	10%	0%
All Salem-Keizer Middle Schools	8%	7%	7%	4%	3%
McKay High School	9%	10%	10%	10%	12%
All Salem-Keizer High Schools	6%	6%	6%	6%	5%

FREE LUNCH	11/12	12/13	13/14	14/15	15/16
Chávez Elementary	N/A	75%	75%	80%	80%
Hallman Elementary	66%	90%	90%	97%	97%
Scott Elementary	70%	79%	79%	72%	86%
Swegle Elementary	72%	66%	66%	79%	80%
Washington Elementary	83%	83%	83%	81%	91%
All Salem-Keizer Elementary	55%	57%	57%	60%	62%
Waldo Middle School	69%	78%	78%	82%	86%
All Salem-Keizer Middle Schools	50%	52%	54%	56%	57%
McKay High School	66%	66%	66%	66%	84%
All Salem-Keizer High Schools	44%	45%	44%	42%	53%

- Free and Reduced Lunch data from Salem-Keizer School District Testing Department based on December enrollment.
- Reduced lunch rates dropped to 0% in all five of the East Salem Elementary Schools that are listed here between the 13/14 and 14/15 school years.
- Free lunch rates increased over the same time period in three of these five elementary schools and Waldo Middle School.
- McKay High School free and reduced lunch rates held steady from 2012/13 to 2014/15.
- Reduced lunch remained 0% at all five elementary schools in 2015/16 and two jumped 10 or more percentage points in free lunch.

STUDENTS WHO MEET OR EXCEED OREGON STATEWIDE ASSESSMENT STANDARDS

School Year	English Language Arts 3 rd -5 th Grade							Language Arts 6 th -8 th Grade			Language Arts 11 th Grade		
	Chávez	Hallman	Scott	Swegle	Wash.	District	State	Waldo	District	State	McKay	District	State
14/15	35.3%	36.3%	23%	28.6%	27.9%	46.8%	51.1%	34.7%	52.7%	56.4%	68.9%	71.8%	68.5%
15/16	39.6%	34.2%	29.3%	23.2%	17.2%	45.2%	52.4%	35.6%	54.7%	56.7%	59.7%	71.7%	70%
School Year	Math 3 rd - 5 th Grade							Math 6 th - 8 th Grade			Math, 11 th Grade		
	Chávez	Hallman	Scott	Swegle	Wash.	District	State	Waldo	District	State	McKay	District	State
14/15	26.4%	25.3%	14.2%	20.7%	17.7%	37.8%	44.8%	22.5%	41%	42.5%	16.2%	30.1%	31.6%
15/16	32.5%	24.7%	15.4%	17.2%	10.8%	37.4%	44.9%	22.6%	40.1%	42.8%	28.4%	32.8%	34.2%

Data from the Oregon Department of Education. The Smarter Balanced and alternate assessments have four performance levels where levels 3 and 4 are meeting the standard for school and district accountability. 2014-2015 was the first operational year of the new English language arts and mathematical assessments.

CIVIC ENGAGEMENT

NEIGHBORHOOD ASSOCIATION MEETINGS

Anyone who lives, works, or own property in Salem is a member of at least one Neighborhood Association (NA). Each volunteer run group is unique. Generally, a board elected by the NA membership meets regularly to address local issues and concerns and improve their neighborhoods. NAs involve residents in local decision-making that affects their neighborhood. Associations also consider and advise on issues like City budget, park improvements, land use, transportation, and crime prevention, and may organize neighborhood activities. City staff provides support and information to the NAs.

Neighborhood Meeting Citizen Attendance

ELNA	Jan	Feb	March	April	May	June	July	Aug	Sept	Oct	Nov	Dec	Average Attendance
2011	17	14	14	10	17	12	Cancelled	6	19	5	4	5	11
2012	Cancelled	17	5	4	7	20	Cancelled	12	10	6	6	9	10
2013	Cancelled	4	5	6	6	10	Cancelled	8	Cancelled	11	6	6	7
2014	Cancelled	Cancelled	6	8	7	12	Cancelled	8	5	11	6	6	8
2015	Cancelled	8	8	10	10	8	Cancelled	7	9	10	11	9	9
2016	Cancelled	15	12	14	11	20	Cancelled	11	6	9	7	9	11
NOLA	Jan	Feb	March	April	May	June	July	Aug	Sept	Oct	Nov	Dec	Average Attendance
2011	9	9	9	7	13	5	8	13	9	11	9	8	9
2012	6	5	10	Not Available	6	8	12	8	13	15	13	10	10
2013	15	12	22	15	8	13	10	6	9	15	8	10	12
2014	6	8	17	12	Cancelled	7	8	8	15	13	6	9	10
2015	10	12	10	7	14	8	15	8	11	15	7	9	11
2016	14	10	8	15	14	11	8	13	4	15	5	19	11
Lansing	Jan	Feb	March	April	May	June	July	Aug	Sept	Oct	Nov	Dec	Average Attendance
2011	12	12	7	20	12	Cancelled	13	7	17	15	3	Cancelled	12
2012	9	10	9	11	11	12	15	9	14	7	7	Cancelled	10
2013	5	9	8	14	8	7	13	10	10	9	6	Cancelled	9
2014	6	9	6	9	7	12	10	7	11	11	10	Cancelled	9
2015	11	16	12	11	7	13	6	11	9	6	8	Cancelled	10
2016	13	12	6	10	8	11	8	11	10	10	11	Cancelled	10

NATIONAL NIGHT OUT BLOCK PARTIES

Each year on the evening of the first Tuesday in August, neighbors are encouraged to turn on outside lights and spend the evening outdoors with fellow neighbors and police. Police agencies support the event by attending neighborhood block parties and bringing along crime prevention information and mascots. Sponsored by the National Association of Town Watch since 1983, it is an event celebrated in all 50 states, US territories, military bases worldwide and many Canadian cities. Numbers below reflect total parties registered with the Salem Police Department and unregistered parties.

	2010	2011	2012	2013	2014	2015	2016
ELNA Block Parties	3	5	6	2	1	2	1
NOLA Block Parties	3	3	2	1	4	3	1
Lansing Parties	0	5	4	3	9	3	2
Total Citywide	145	177	140	162	147	150	156

COMMUNITY ASSETS

EAST SALEM CITY PARKS

Brown Road Park

2350 Brown Road NE

Lansing (Eastgate Basin) Park

3203 Hawthorne NE

Park Partner:

Relevant Life Church

Livingston Park

2855 Hawthorne NE

Park Partner:

Salem Academy

McKay Park

2755 Hollywood Drive NE

Park Partners:

McKay Students

Salem Academy

Northgate Park

3260 Northgate NE and

3575 Fairhaven NE

Park Partner:

Northgate Wesleyan Church

Royal Oaks Park

4882 Carriage Court NE

Park Partners:

Willamette University

Friends of Trees

Livingstone Academy

Weathers Street Park

4188 Weathers Street NE

Park Partners:

Blanchet Catholic School

Salem Academy

-Park Partner information from City of Salem Parks, December 2016

ACTIVITIES

Community Coffee Hours

- **La Casita in Lansing Neighborhood**
3032 Sunnyview Rd, Thursdays
noon, 503-551-6548
- **Cafecitos at Hallman Elementary**
4000 Deerhaven Dr NE, Wed at
9:30 am, 503-399-3451
- **La Placita in the East Lancaster
Neighborhood**, 1880 45th Ave NE,
1st Thurs, 12:30 pm for parents of
children with special needs, last
Thurs, 11 am for all, 503-989-1015

Exercise Groups

- **La Casita**, 3032 Sunnyview Rd,
503-551-6548
- **La Placita**, 1880 45th Ave NE,
503-989-1015
- **Neighborhood Walking Groups**,
for schedule, 503-373-3760 or
JustWalkSalem.com

Kids and Youth Activities

- **Oak Park Community Church of God
Preschool Indoor Park**, 2990
Lancaster Drive NE, 503-363-3626
- **Salem First Free Methodist Church
Afterschool Program**, 4455
Silverton Rd NE, 503-851-5313
- **Swegle Boys and Girls Club**,
grades 1-12, 1711 Aguilas Court
NE, 503-391-1519

FOOD

Community Gardens

- **Brown Road**, 2350 Brown Rd NE,
503-383-2920
- **Calvary Chapel**, 1550 Hoffman
Road NE, 503-304-8840
- **La Casita**, Children's Teaching
Garden, 3032 Sunnyview Rd NE
- **Northgate New Direction
Garden**, 3193 Silverton Rd NE,
503-269-5317
- **Northgate Peace and
Forgiveness Garden**, 3260
Northgate NE, 503-269-5317
- **Redeemer Lutheran Church**,
4663 Lancaster NE, 503-393-7121

Food Pantries

- **New Harvest Church**, 4290
Portland Rd NE, 503-763-6911
- **New Hope Foursquare Church**,
4963 Swegle Rd NE, 503-370-8886
- **Pauline Memorial AME Zion**,
3953 Sunnyview Rd NE,
503-399-0130
- **People's Church Assembly of
God**, 4500 Lancaster NE,
503-304-4000

Food Pantry Drop Sites

- **First Free Methodist Church**, 4455
Silverton Rd NE, 503-851-5313
- **Holy Cross Lutheran Church**, 1998
Lansing Ave NE, 503-364-6041

LITTLE FREE LIBRARIES

Take a book, leave a book, any
time, any day.

- **Brown Road Garden and Park**,
2350 Brown Road NE
- **Family Building Blocks**, 2425
Lancaster Drive NE
- **First Free Methodist Church**,
4455 Silverton Rd NE
- **La Casita**, 3032 Sunnyview Rd NE
Also hosts free children's lending
library, 503-551-6548 for days
and times.
- **La Placita**, 1880 45th Avenue NE
- **Oak Park Community Church of
God**, 2990 Lancaster Drive NE

OTHER

Celebrate Recovery Program

at Grace Community Church
4105 Lancaster Dr NE, 97305
503-393-7515

Goodwill Job Connections

3535 Lancaster Dr NE, 97305
503-798-9103

Mid Valley Literacy Center

1850 45th Ave NE, 97305
PO Box 7639 Salem, OR 97303
503-463-1488

COMMUNITY ASSETS

SCHOOLS

SALEM-KEIZER ELEMENTARY SCHOOLS

Chávez Elementary, K-5

2400 Walker Rd NE, Salem 97305
503-399-2571

Principal, Olga Cobb

Hallman Elementary, K-5

4000 Deerhaven Dr NE, Salem
97301, 503-399-3451

Principal, Jessica Brenden

Business Partners: Starbucks – Keizer Station, The Salem-Keizer Coalition for Equality, Sylvan Learning Center, LCG Pence Construction LLC, McKay Area CPT, Iglesia Bautista Cristo Vive and New Harvest Church

Scott Elementary, K-5

4700 Arizona Avenue NE
503-399-3302

Principal, Sara Casebeer

Business Partner: MAPS Credit Union

Swegle Elementary, K-5

1751 Aguilas Ct NE, Salem, 97301
503-399-3191

Principal, Suzanne West

Business Partners: Roth's Grocery on Lancaster, Christian Center of Salem, Craft Warehouse and Office Max on Lancaster

Washington Elementary School

3165 Lansing Ave NE, Salem, 97301
503-399-3193

Principal, Christine Bowlby

Business Partners: Country Insurance & Financial Services, Papa Johns Pizza on Center St, Starbucks on Lancaster Dr NE, and Tu Casa Real Estate

SALEM-KEIZER MIDDLE AND HIGH

Waldo Middle School, grades 6-8

2805 Lansing Ave NE, Salem, 97301
503-399-3215

Principal, Tricia Nelson

Assistant Principal, Joe Valencia

Business Partners: Assistance League of Salem, Capital Baptist Church, Chemeketa Community College, Christmas Knoll Tree Farm, Lansing Neighborhood, Lion's Club of North Salem, McKay Area CPT, Salem First Church of Nazarene, Salem First Free Methodist, Windermere/Pacific West, Joe Mocha, PhotoVision, Fred Meyer

McKay High School, grades 9-12

2440 Lancaster Dr NE, Salem, 97305
503-399-3080

Principal, Sara LeRoy

Asst Principals: Dale Pederson, Patrick Schrader and David Wood

PRIVATE SCHOOLS

Blanchet Catholic School, grades 6-12

4373 Market St NE, Salem, 97301
503-391-2639

President, Tony Guevara

Principal, Brian Heinze

Vice Principal, Carlton Wise

Salem Academy Christian Schools Preschool through 12th grade

942 Lancaster Dr NE, Salem, 97301
503-378-1219

Superintendent, Jeff Williamson

PreK-5 Principal, Kathi Hammer

High School Principal

Micah Powers

Middle School Principal

Gregg Hilker

Preschool/Childcare Director

Deanna Wilson

2016 EAST SALEM BUSINESSES

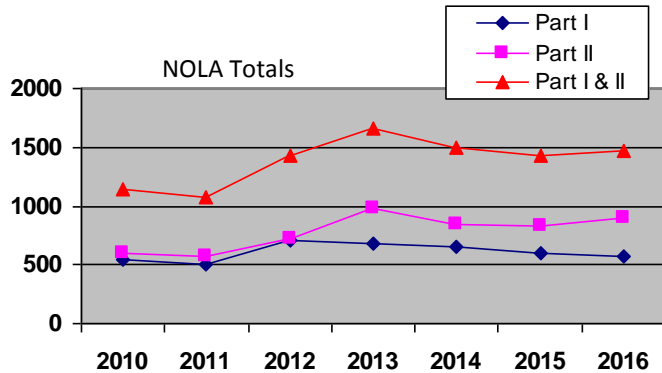
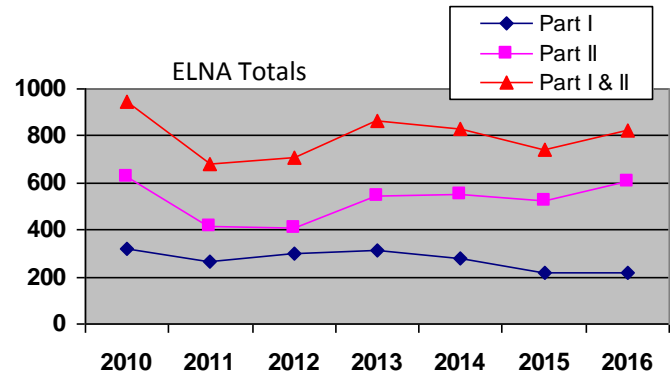
	Education	Government	Retail, Commerce, Service Businesses	Total Businesses	<i>Vacant Land</i>
East Lancaster	18	2	155	176	25
North Lancaster	19	3	118	139	10
Lansing	13	1	102	114	16

The City of Salem does not have a business license. Data derived by City of Salem using Geographic Information (GIS) software and sorting the data by associated Placetypes by neighborhood with the most current information available for listed businesses and development projects.

CRIME

REPORTED CRIME TOTALS FOR ELNA

	2010	2011	2012	2013	2014	2015	2016
Part I*	321	262	298	316	276	218	219
Part II**	624	415	408	547	554	526	606
Part I & II	945	677	706	863	830	744	825

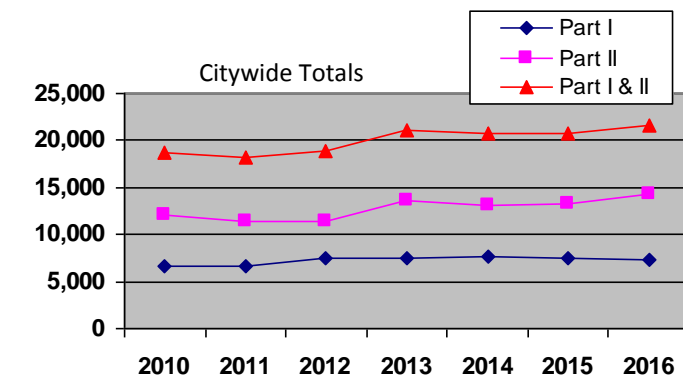
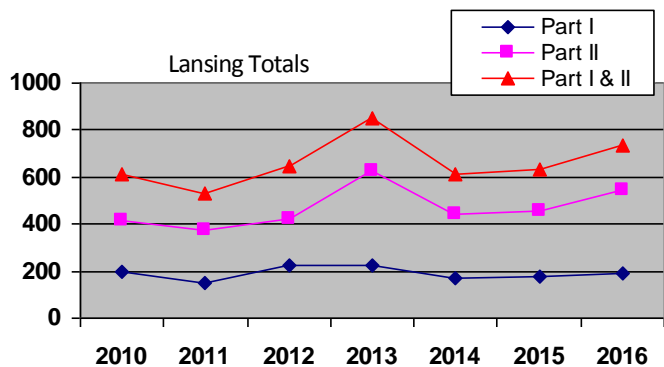


REPORTED CRIME TOTALS FOR NOLA

	2010	2011	2012	2013	2014	2015	2016
Part I*	539	507	703	685	655	601	571
Part II**	598	572	726	974	847	832	893
Part I & II	1,137	1,079	1,429	1,659	1,502	1,433	1,464

REPORTED CRIME TOTALS FOR LANSING

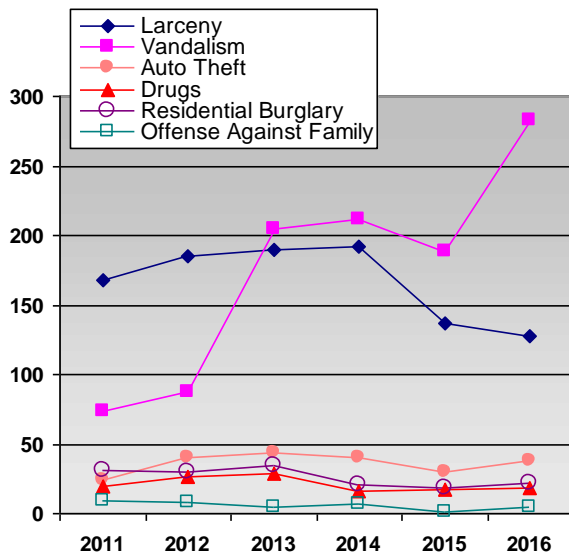
	2010	2011	2012	2013	2014	2015	2016
Part I*	195	153	224	222	170	179	192
Part II**	417	376	419	626	441	454	545
Part I & II	612	529	643	848	611	633	737



REPORTED CRIME TOTALS CITYWIDE

	2010	2011	2012	2013	2014	2015	2016
Part I*	6,661	6,672	7,480	7,477	7,681	7,416	7,394
Part II**	12,109	11,450	11,348	13,568	13,028	13,257	14,258
Part I & II	18,770	18,132	18,828	21,045	20,709	20,673	21,652

- * Part I crimes include: aggravated assault, arson, auto theft, business burglary, justifiable homicide, larceny, murder, other burglary, rape, residential burglary and robbery.
- ** Part II crimes include: assaults, curfew, DUI, disorderly conduct, drugs, embezzlement, escape, forgery/counterfeit, fraud, gambling, kidnapping, liquor laws, offense against family, prostitution, runaway juveniles, sex offenses, stolen property, trespass, vandalism and weapons. In 2013, instances of reported graffiti began being included in statistics for vandalism.



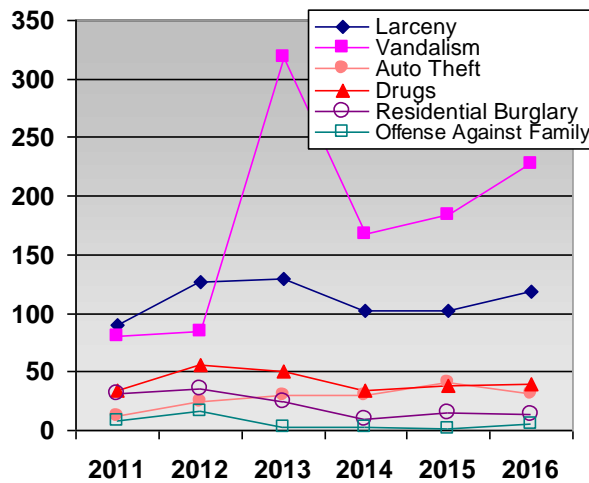
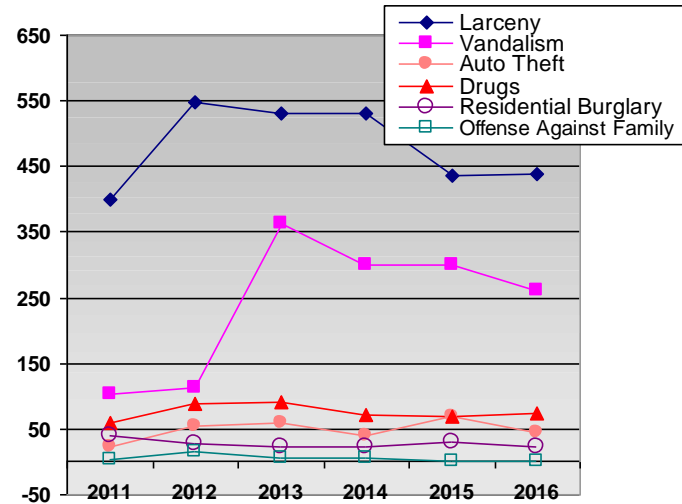
CRIME

REPORTED CRIME BY TYPE FOR ELNA

	2011	2012	2013	2014	2015	2016
Selected Part I Crimes*						
Larceny (theft)	168	185	190	192	137	128
Auto Theft	24	40	44	40	30	38
Residential Burglary	31	30	34	21	18	22
Selected Part II Crimes**						
Vandalism [◇]	73	87	205	212	189	283
Drugs	20	26	29	16	17	18
Offense Against Family [°]	9	8	5	7	1	5

REPORTED CRIME BY TYPE FOR NOLA

	2011	2012	2013	2014	2015	2016
Selected Part I Crimes *						
Larceny (theft)	399	548	531	532	436	439
Auto Theft	23	54	60	41	70	45
Residential Burglary	39	28	22	22	29	23
Selected Part II Crimes**						
Vandalism [◇]	103	113	364	299	299	261
Drugs	60	88	92	72	69	75
Offense Against Family [°]	4	16	5	6	2	0



REPORTED CRIME BY TYPE FOR LANSING

	2011	2012	2013	2014	2015	2016
Selected Part I Crimes *						
Larceny (theft)	90	127	129	102	102	119
Auto Theft	12	25	30	30	41	31
Residential Burglary	31	36	25	10	15	14
Selected Part II Crimes**						
Vandalism [◇]	80	84	319	168	184	227
Drugs	34	56	50	34	38	40
Offense Against Family [°]	8	16	3	3	1	5

* Part I crimes include: aggravated assault, arson, auto theft, business burglary, justifiable homicide, larceny, murder, other burglary, rape, residential burglary and robbery.

** Part II crimes include: assaults, curfew, DUI, disorderly conduct, drugs, embezzlement, escape, forgery/counterfeit, fraud, gambling, kidnapping, liquor laws, offense against family, prostitution, runaway juveniles, sex offenses, stolen property, trespass, vandalism and weapons.

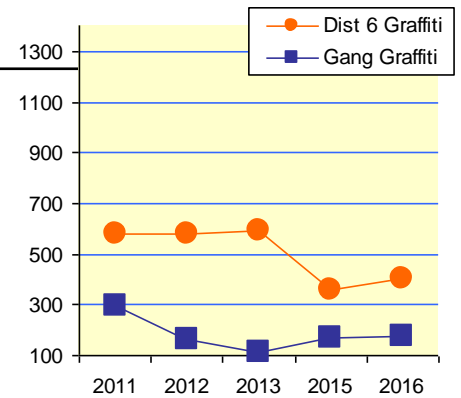
◇ In 2013, instances of reported graffiti began being included in statistics for vandalism.

° Offense Against Family includes crimes such as child abandonment, child neglect, endangering the welfare of a child and criminal mistreatment.

CRIME

INCIDENTS OF GRAFFITI

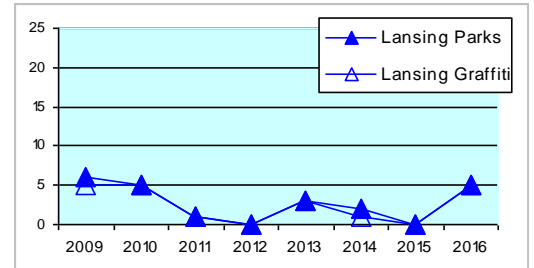
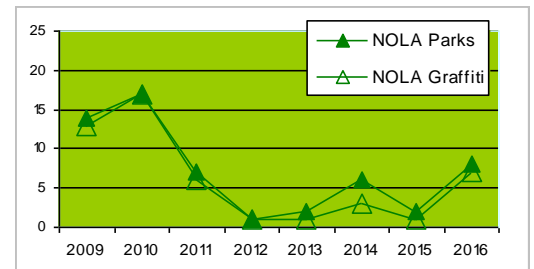
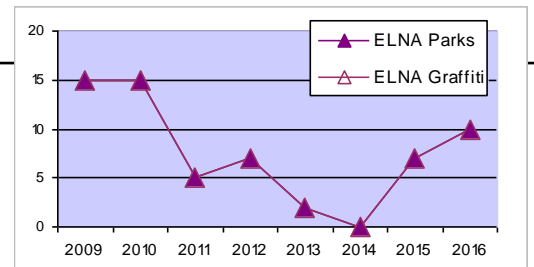
	2011	2012	2013	2014 ^o	2015	2016
Total Graffiti Reports, District 6*	577	581	594	293	359	402
Dist 6, including gang related graffiti	295	166	110	91	167	175
% Dist 6, including gang related graffiti	51%	29%	19%	31%	47%	44%
Total Graffiti Reports Citywide	3,194	3,326	3,134	1,294	2,179	2,420
Citywide, including gang related graffiti	1,094	795	444	361	851	790
% Citywide, including gang related graffiti	34%	24%	14%	28%	39%	33%



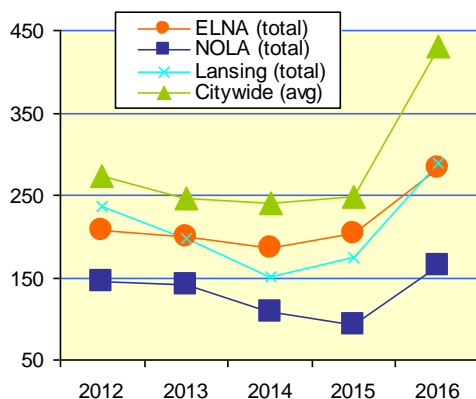
*Police District 6 most closely includes the combined boundaries of the East and North Lancaster Neighborhood Associations.
^o2014 Data available July 1 through December 31 only. Totals should not be compared with previous year totals.

INCIDENTS OF PARK DAMAGE

	2009	2010	2011	2012	2013	2014	2015	2016
Weathers Street Park	8	12	4	5	2	0	5	6
Royal Oaks Park	7	3	1	2	0	0	2	4
Total ELNA Incidents	15	15	5	7	2	0	7	10
ELNA, included graffiti	15	15	5	7	2	0	7	10
Brown Road Park	0	0	0	0	0	0	0	0
McKay School Park	14	17	7	1	2	6	2	8
Total NOLA Incidents	14	17	7	1	2	6	2	8
NOLA, included graffiti	13	17	6	1	1	3	1	7
Lansing (Eastgate) Park	5	5	1	0	1	1	0	2
Livingston Park	1	0	0	0	2	1	0	3
Total Lansing Incidents	6	5	1	0	3	2	0	5
Lansing, included graffiti	5	5	1	0	3	1	0	5
Total Citywide Incidents	145	147	68	38	55	26	18	104
Citywide, included graffiti	114	136	53	29	45	18	12	83



COMPLIANCE SERVICES COMPLAINTS



Below is a summary of citizen complaints to City of Salem Code Compliance Services. This included code violations related to abandoned vehicles, property maintenance, junk and solid waste.

	2012	2013	2014	2015	2016
ELNA Code Complaints	208	200	186	203	283
NOLA Code Complaints	146	141	108	93	164
Lansing Code Complaints	237	197	151	175	289
Citywide Code Complaints	4,938	4,439	4,336	4,484	7,740
Average Number of Complaints for all Salem Neighborhoods which vary in size	274	247	241	249	430

For more information about the City of Salem Neighborhood Partnership Program,
please contact Jessica Loewen Preis, Neighborhood Partnership Coordinator at
555 Liberty Street SE, Rm 305, Salem, Oregon 97301, 503-588-6207, jlpreis@cityofsalem.net