

# Church @the Park

2007 to 2021



# MISSION

Church at the Park (C@P), serves the unsheltered in the Salem area. C@P was formed in 2007 to interact in a relational way with people who experience homelessness. As the Capital of Oregon, Salem is a central hub in the State for those who experience homelessness, incarceration, and mental illness. C@P has three functioning priorities: Collaborative Navigation, Emergency Sheltering and Workforce Development.

# HOPE focused Navigation

HOPE grows when we are **motivated** towards a clear **goal** and have a **pathway** to achieve that goal. Each time we access a pathway or achieve a goal our HOPE grows. Why does HOPE matter so much to us? How HOPE filled we are about our goals increases at least 24 other assets in our life (positive relationships, positive emotions, ect.). The Church @the Park is a place full of people, Churches and organizations who provide PATHWAYS!

- Women's Group
- Recovery meetings
- Housing Interviews





# Dignity focused Navigation

To restore dignity and relieve hunger through SHARED meals.

- 200 Meals per day
- 20 Church Partners
- 4 Restaurant's
- MPFS 3x per week



*A banquet of acceptance and love for those who need it most.*



# Partnership focused Navigation

*To meet critical needs for shelter and employment through RELATIONAL partnerships.*

- Transitional Shelters
- Safe Parking
- MPFS - Food Boxes
- Arches - Showers
- Be Bold - Outreach
- Union Gospel Mission
- City of Salem



# Transformation & Workforce Development

*Inviting all who join us to SERVANTHOOD and leadership.*

- Leaders Meeting
- Clean up
- Food Pantry
- Warming Center
- Gardening
- Service Groups
- Clothing
- Monthly Training





# Pavilion @State Fairgrounds





# Securing Transition

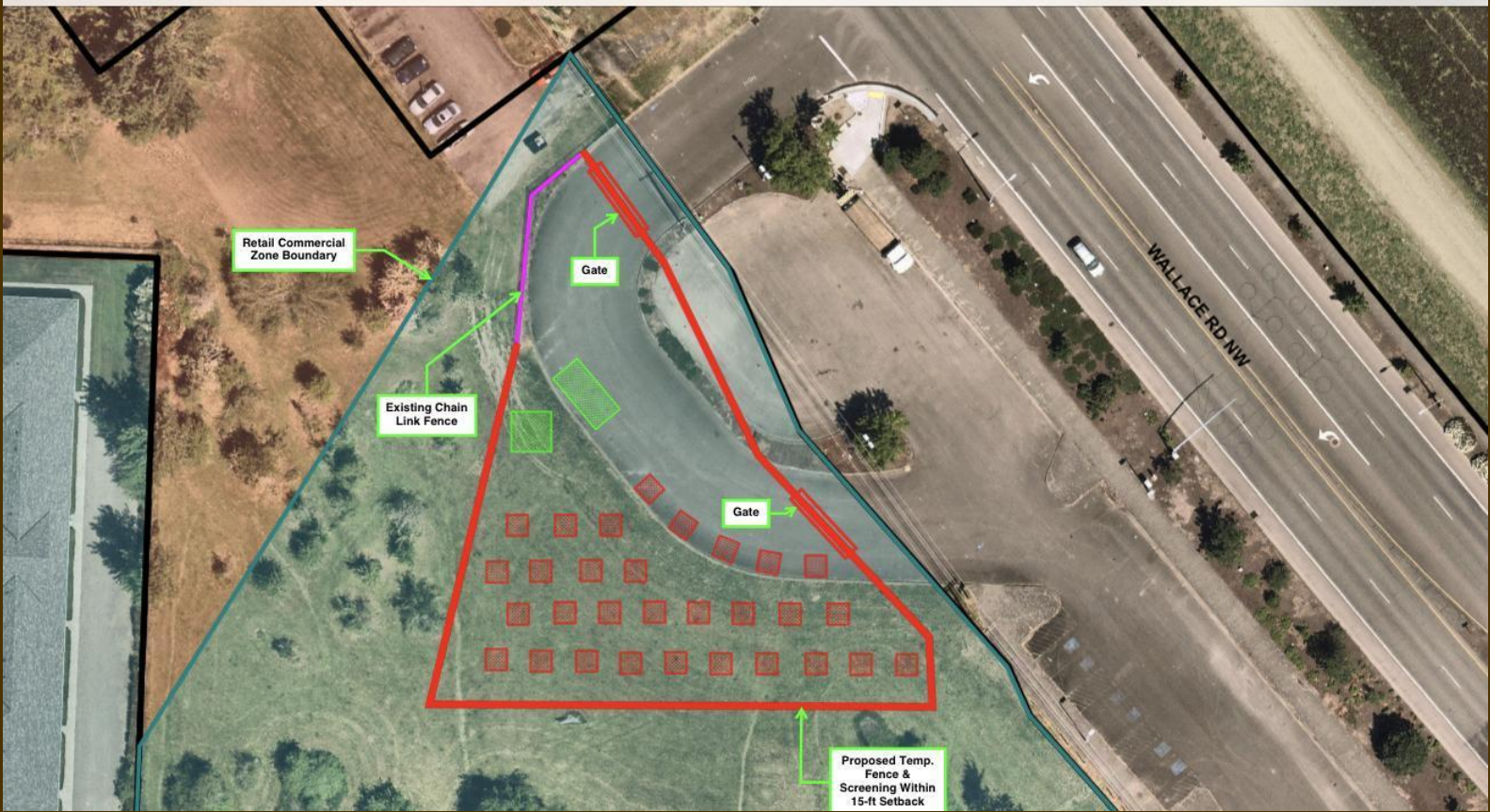
*Empowering people to change their lives and exit poverty by providing vital services and community leadership.*

- 50 Safe Parking spots
- 40 beds at “Village of Hope”
- 60 beds at CCS
- 80 overnight beds
- 60 beds at “next site”

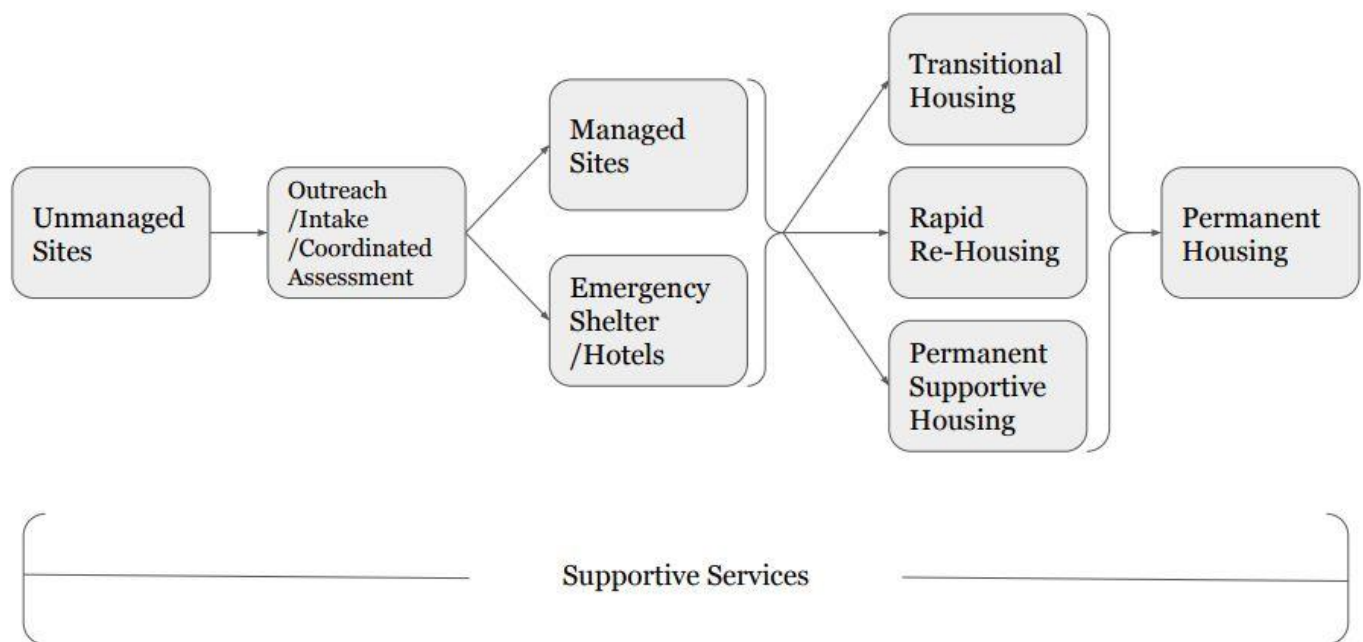
















# Securing Property

- 1 Shelter in all 8 Wards
- Warehouses can be used with Tents.
- Structures are best for outside application.
- Lower numbers can create self management opportunities.
- Coordinated referral services are essential.





# Securing a Community of Belonging

