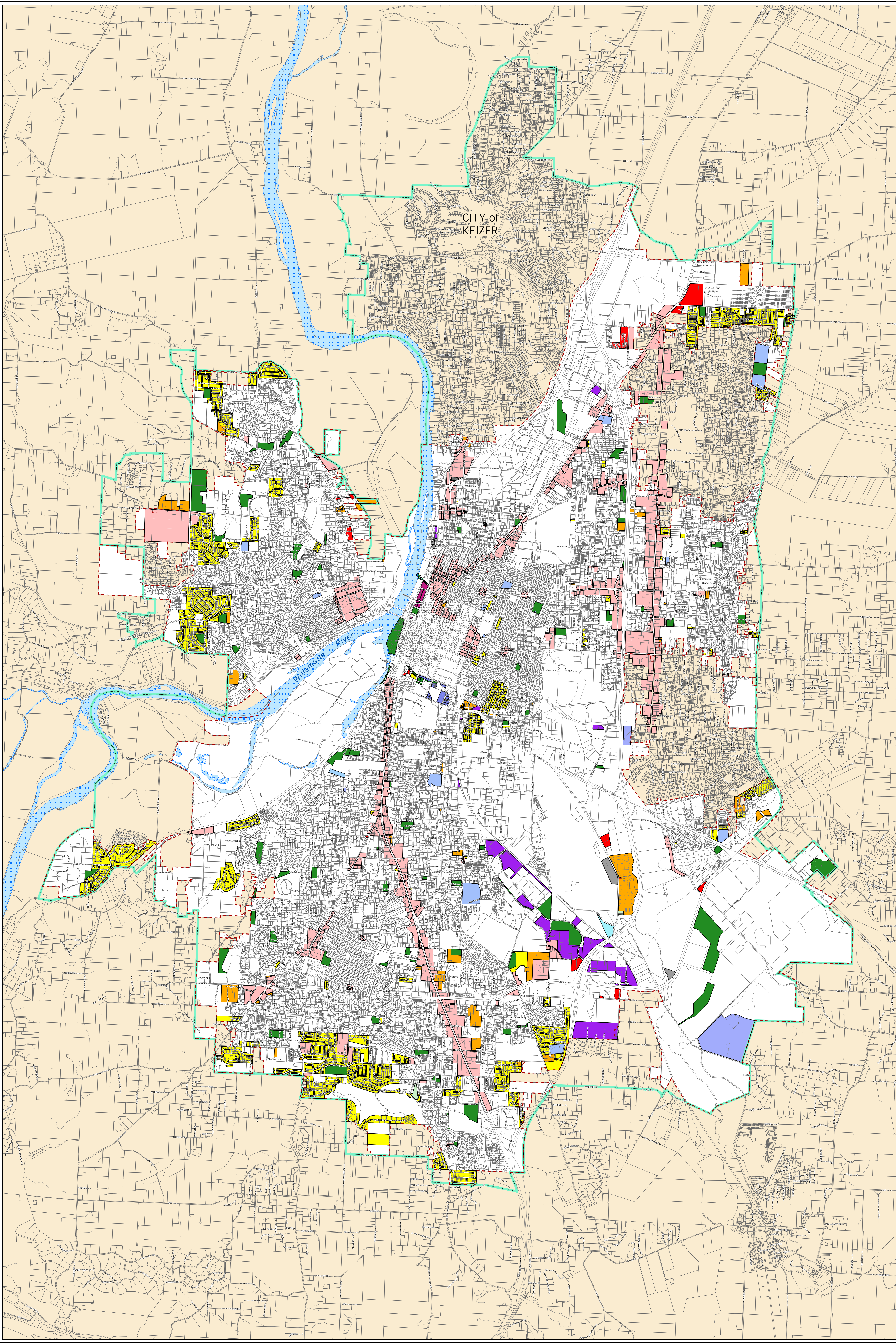


Proposed Salem Comprehensive Plan Designations Only

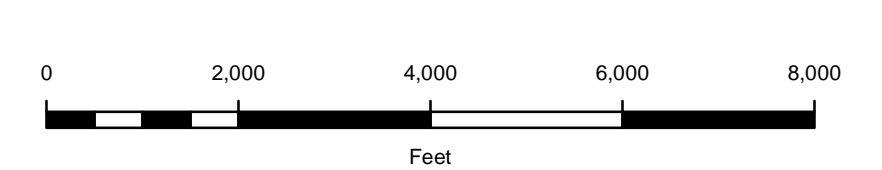
City of Salem

Community Development Department

MAY
2022



- ### Key
- Proposed Salem Comprehensive Plan Designation Only**
- CB - Central Business District
 - COM - Commercial
 - CS - Community Service
 - CSA - Community Service Airport
 - CSC - Community Service Cemetery
 - CSE - Community Service Education
 - CSG - Community Service Government
 - CSH - Community Service Hospital
 - CSS - Community Service Sewage and Solid Waste
 - DR - Developing Residential
 - EC - Employment Center
 - FRM - Farm Resource Management
 - IC - Industrial Commercial
 - IND - Industrial
 - MF - Multi-Family Residential
 - MU - Mixed Use
 - POS - Parks - Open Space - Outdoor Recreation
 - ROM - River Oriented Mixed Use
 - SF - Single Family Residential
 - Proposed Comprehensive Plan Change Areas
 - Urban Growth Boundary
 - Salem City Limits
 - Outside Salem City Limits
 - Taxlots
 - Street Centerlines
 - Willamette River



This product is provided as is, without warranty. In no event is the City of Salem liable for damages from the use of this product. This product is subject to license and copyright limitations and further distribution or resale is prohibited.