

Affordable Housing



Reduced Emissions



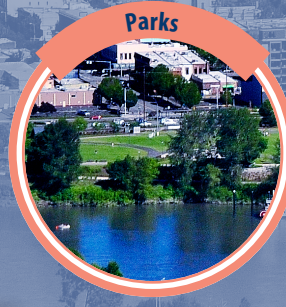
Walkable Areas



Biking & Roadways



Parks



Healthy Streams



YOUR GUIDE TO PLANNING FOR OUR FUTURE

We adopted Our Salem – an update to the City’s Comprehensive Plan – in 2022.
Now, our planning work continues.

Our Salem set the policy framework for future growth and development by updating the Salem Area Comprehensive Plan, Comprehensive Plan Map, zoning map, and zoning code.

Now, we're focusing on detailed planning for:

- Healthy streams
- Improved climate resilience and reduced emissions
- Green space for everyone
- Walking, biking, roadways, street designs, and future investments
- More housing choices and walkable centers
- Traffic calming

Equity is central to all we do. Why is equity important?

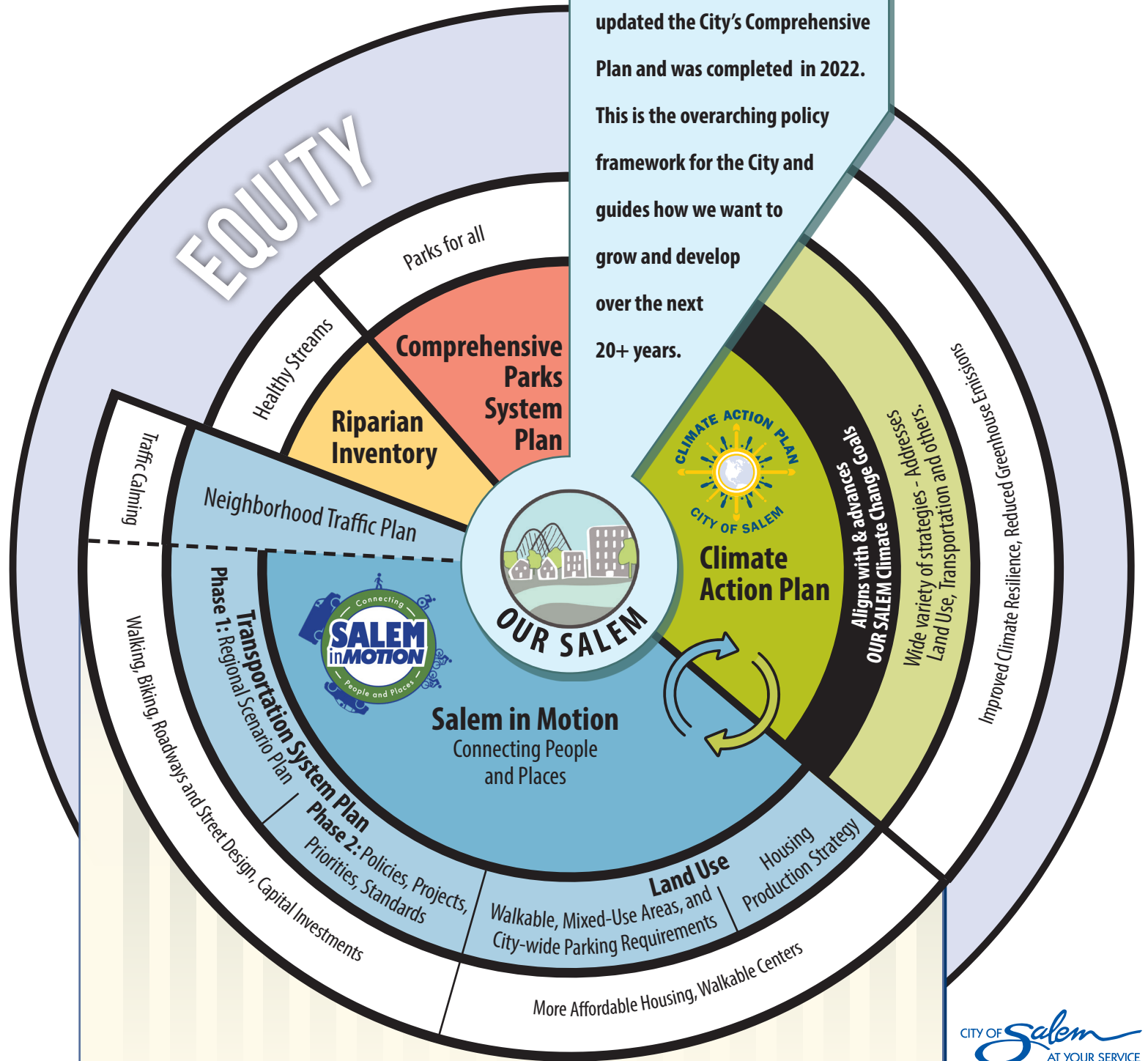
- Equity means all residents have the opportunity to participate and thrive in an inclusive society. This requires rectifying unequal access to resources and opportunities caused by historic and current systems of oppression and exclusion related to race, income, ability, gender, sexual identity, and other factors.
- An equitable community overcomes disparities by providing increased levels of support to community members based on their needs. In Salem, it is a priority to advance equity in decision-making processes and the outcomes of those processes, including policies, investments, practices, and procedures.

CONNECTIONS

OUR SALEM

is the planning process that updated the City's Comprehensive Plan and was completed in 2022.

This is the overarching policy framework for the City and guides how we want to grow and develop over the next 20+ years.



STATE OF OREGON: Climate Friendly and Equitable Community Rules

- » New and amended STATE RULES focused on Land Use, Transportation, and Equity.
- » Direct REQUIREMENTS to cities including Transportation, Land Use, Housing, and Equity.

PROJECT DESCRIPTIONS

Climate Action Plan

2022 Accepted / Ongoing Implementation

Aligns with and advances the Our Salem project



- Outlines strategies and actions to reduce greenhouse gas emissions and increase climate resiliency in Salem.
- Includes 183 strategies related to transportation and land use, energy, economic development, natural resources, materials and waste, local food systems, and strengthening our community.

Comprehensive Parks System Master Plan

2023-2026

Builds on the Our Salem project

- Outlines goals, policies, and implementation steps to guide park acquisition and development over the next 20 years.

Neighborhood Traffic Management Plan

2023

Implements the TSP

- Outlines how traffic speeds and volume concerns in residential areas are examined, prioritized, and addressed on an ongoing basis.

Riparian Inventory

Dates to be determined

Builds on the Our Salem project

- Inventories of rivers, creeks, and waterbodies and the land along these features known as riparian corridors.
- Leads to updated regulations that increase protections of waterways and riparian corridors.
- Complies with Oregon's Statewide Land Use Planning Goal 5.

INFLUENCES

Climate-Friendly and Equitable Communities (CFEC)

Adopted in 2022 by the Oregon Land Conservation and Development Commission

- State rules that require cities in metropolitan areas to make changes to transportation and land use plans and parking regulations.
- Aims to reduce greenhouse gas emissions from transportation and promote equity.



INFLUENCES

Salem in Motion

2023-2026

Builds on the Our Salem project and Climate Action Plan

- Updates the Salem Transportation System Plan and implements the State's Climate-Friendly and Equitable Communities rules.
- ▶ **Transportation System Plan (TSP) 2023-2026**
Part of the Salem in Motion project
 - Outlines policies, programs, and projects to meet transportation challenges and priorities over the next 20 years.
- ▶ **TSP Phase 1: Regional Scenario Plan 2023-2024**
Required by the CFEC Rules
 - Establishes high-level strategies to meet the State's climate pollution reduction targets.
 - Focuses on changes and investments in active transportation, transit, parking management, streets, and other related improvements.
 - Requires regional partnership (with Keizer and Marion County).
- ▶ **TSP Phase 2: Policies, Projects, Priorities, Standards**
Prioritizes projects to align with Regional Scenario Plan
 - Updates the Salem Transportation System Plan.
 - Implements local priorities through new transportation project lists, standards, and policies.

▶ Land Use: Parking Reform

2023

Required by CFEC Rules

- Changes to citywide parking regulations required by the State.
- Eliminates minimum off-street parking requirements citywide.
- Revises parking lot regulations.

▶ Land Use: Walkable, Mixed-Use Areas

2023-2026

Builds on the Our Salem project and required by CFEC Rules

- Promotes compact, walkable, mixed-use development and supports access by people who walk, bike, or take transit.
- Builds on the Our Salem project that rezoned areas to different mixed-use zones.

▶ Housing Production Strategy

2024-2025

Implements the Our Salem project and is required by the State

- Describes strategies to encourage the production of housing to meet Salem's housing needs.
- Focuses on regulatory, financial, and land-based strategies.



PLANNING FOR OUR FUTURE

RESOURCES AND CONTACT INFORMATION



Resources

SALEM IN MOTION

www.cityofsalem.net/salem-in-motion

OUR SALEM

www.cityofsalem.net/our-salem

CLIMATE ACTION PLAN

www.cityofsalem.net/climate-action

PARK PLANNING AND DEVELOPMENT

www.cityofsalem.net/park-planning

CLIMATE-FRIENDLY AND EQUITABLE COMMUNITIES

www.oregon.gov/lcd/CL/Pages/CFEC.aspx

www.oregon.gov/odot/Planning/Pages/Climate-Transportation-Planning.aspx

NEIGHBORHOOD TRAFFIC MANAGEMENT PLAN

www.cityofsalem.net/community/transportation-getting-around/traffic-road-conditions/neighborhood-traffic-management-plan

Contact Information

GENERAL INFORMATION

Lisa Anderson-Ogilvie

Planning Administrator

503-540-2381

lmanderson@cityofsalem.net

SALEM IN MOTION - TRANSPORTATION

Julie Warncke

Transportation Planning Manager

503-588-6211

jwarncke@cityofsalem.net

SALEM IN MOTION - LAND USE

Eunice Kim

Long Range Planning Manager

503-588-6173

ekim@cityofsalem.net

CLIMATE ACTION PLAN

Heather Dimke

Management Analyst

503-588-6211

hdimke@cityofsalem.net

COMPREHENSIVE PARKS SYSTEM MASTER PLAN

Rob Romanek

Parks and Natural Resources Planning Manager

503-588-6211

rromanek@cityofsalem.net

RIPARIAN INVENTORY

Jeffery Johnson

Natural Resources Planner

503-588-6211

jdjohnson@cityofsalem.net