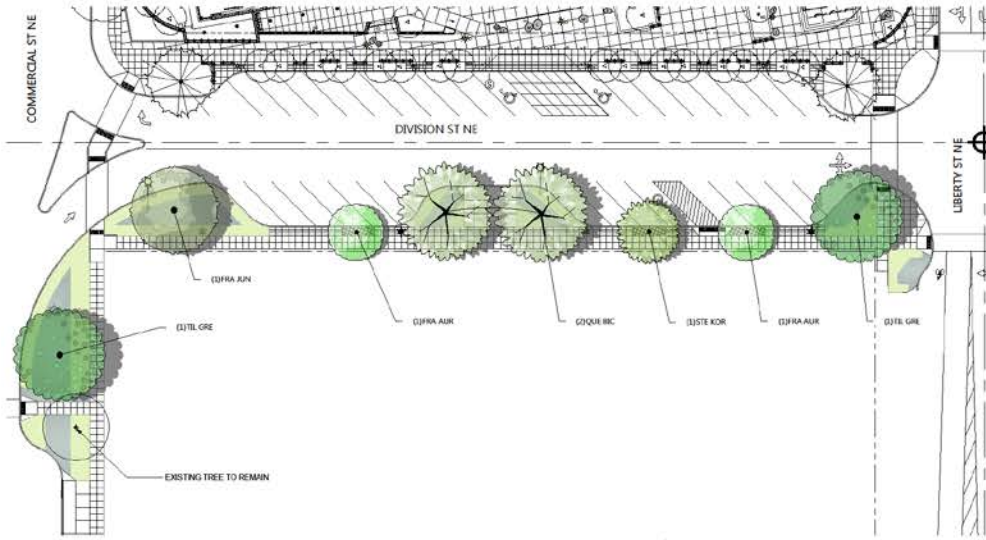
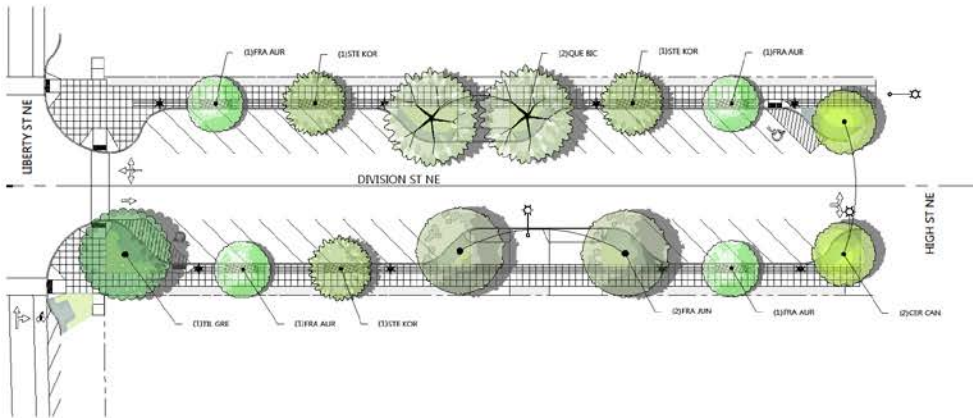




# PRELIMINARY OFFSITE PLANTING PLAN



1 WESTERN PLANTING CONCEPT  
1" = 20'-0"



2 EASTERN PLANTING CONCEPT  
1" = 20'-0"

**LEGEND**

- SMALL VEGETATION**
  - 0'-18"
  - Groundcover or grass
- MEDIUM VEGETATION**
  - 1'-3'-2'
  - Grass or small/medium shrub
- GRASS**
  - 0'-36"
  - 1 species per planter

**TREE COUNT**

	EXISTING TREES TO BE REMOVED	PROPOSED TREES TO BE PLANTED
COMMERCIAL ST to LIBERTY ST SOUTH	3	9
LIBERTY ST NE to HIGH ST NE NORTH	10	7
LIBERTY ST NE to HIGH ST NE SOUTH	10	7

**TREE COUNT**

	EXISTING TREES TO BE REMOVED	PROPOSED TREES TO BE PLANTED
COMMERCIAL ST to LIBERTY ST SOUTH	3	9
DIVISION ST NE to HIGH ST NE NORTH	10	7
DIVISION ST NE to HIGH ST NE SOUTH	10	7

**PLANT SCHEDULE**

TREES	QTY	BOTANICAL NAME	COMMON NAME	CONT	CAL
CER CAN	2	Cercis canadensis	Eastern Redbud	B & B	1.5'Gal
FRA ALN	3	Fraxinus americana 'Jungfrau'™	Autumn Purple White Ash	B & B	2'Gal
FRA ALN	6	Fraxinus excelsior 'Aureata'	Golden Desert Ash	B & B	1.5'Gal
QUE RIC	4	Quercus bicolor	Swamp White Oak	B & B	2'Gal
STE KOR	4	Stewartia korean	Korean Stewartia	B & B	1.5'Gal
TL GRE	3	Tilia cordata 'Greenspire'	Greenspire Littleleaf Linden	B & B	1.5'Gal

DRAFT