

- TREE PROTECTION SPECIFICATIONS**
1. PRECONSTRUCTION CONFERENCE. PRIOR TO THE START OF CONSTRUCTION ACTIVITY, THE CONTRACTOR SHALL COORDINATE WITH THE PROJECT ARBORIST IN A TIMELY MANNER TO REVIEW THE TREE PROTECTION PLAN, VERIFY THAT TREES TO BE RETAINED ARE IDENTIFIED WITH NUMBERED TAGS ON THE GROUND, AND TO INSPECT AND VERIFY THE INSTALLATION OF TREE PROTECTION MEASURES.
 2. FENCING. TREES TO REMAIN ON SITE SHALL BE PROTECTED BY INSTALLATION OF TREE PROTECTION FENCING AS DEPICTED ON SITE PLANS IN ORDER TO PREVENT INJURY TO TREE TRUNKS OR ROOTS, OR SOIL COMPACTION WITHIN THE ROOT PROTECTION AREA. FENCES SHALL BE A MINIMUM 6-FOOT HIGH 2-INCH CHAIN LINK MESH, SECURED TO METAL POSTS DRIVEN INTO THE GROUND. THE CONTRACTOR IS RESPONSIBLE FOR COORDINATING WITH THE PROJECT ARBORIST PRIOR TO OPENING, ADJUSTING OR REMOVING TREE PROTECTION FENCING.
 3. TREE PROTECTION ZONE. WITHOUT AUTHORIZATION FROM THE PROJECT ARBORIST, NONE OF THE FOLLOWING SHALL OCCUR BENEATH THE DRIPLINE OF ANY PROTECTED TREE:
 - a) GRADE CHANGE OR CUT AND FILL;
 - b) NEW IMPERVIOUS SURFACES;
 - c) UTILITY OR DRAINAGE FIELD PLACEMENT;
 - d) STAGING OR STORAGE OF MATERIALS AND EQUIPMENT; OR
 - e) VEHICLE MANEUVERING.
 THE CONTRACTOR SHALL BE RESPONSIBLE FOR CONTACTING THE PROJECT ARBORIST IN A TIMELY MANNER PRIOR TO WORKING BENEATH PROTECTED TREE DRIPLINES. ROOT PROTECTION ZONES MAY BE ENTERED FOR TASKS LIKE SURVEYING, MEASURING AND SAMPLING. FENCES MUST BE CLOSED UPON COMPLETION OF THESE TASKS.
 4. TREE AND STUMP REMOVAL. TREES TO BE REMOVED SHALL BE CLEARLY IDENTIFIED WITH TREE-MARKING PAINT OR OTHER METHODS APPROVED IN ADVANCE BY THE PROJECT ARBORIST. PROTECTION FENCING MAY BE TEMPORARILY OPENED IN TRACT B FOR REMOVAL OF TREES #6654 AND #6655, IN THE REAR OF LOT 3 FOR REMOVAL OF TREE #6248 AND #6375, IN THE REAR OF LOT 9 FOR REMOVAL OF TREE #50316 AND IN THE REAR OF LOT 10 FOR REMOVAL OF TREES #50398 AND #50399. WITHIN TREE PROTECTION ZONES, TREE REMOVAL SHALL BE PERFORMED WITH HAND TOOLS ONLY AND TREES SHALL BE DIRECTIONALLY FELLED OR SURGICALLY REMOVED TO AVOID DAMAGE TO REMAINING NEARBY TREES. THE STUMPS OF THESE PARTICULAR TREES SHALL REMAIN IN THE GROUND, BE REMOVED APPROXIMATELY 6-INCHES BELOW THE GROUND SURFACE USING A STUMP GRINDER, OR ELSE EXTRACTED FROM THE GROUND UNDER ARBORIST SUPERVISION.
 5. PRUNING. PRUNING MAY BE NEEDED TO PROVIDE OVERHEAD CLEARANCE AND TO REMOVE DEAD AND DEFECTIVE BRANCHES FOR SAFETY. THE PROJECT ARBORIST CAN HELP IDENTIFY WHERE PRUNING IS NECESSARY ONCE TREES RECOMMENDED FOR REMOVAL HAVE BEEN REMOVED AND THE SITE IS PREPARED FOR CONSTRUCTION. TREE REMOVAL AND PRUNING SHALL BE PERFORMED BY A QUALIFIED TREE SERVICE.
 6. EXCAVATION AND ROOT PRUNING. EXCAVATION BENEATH PROTECTED TREE DRIPLINES SHALL BE AVOIDED IF ALTERNATIVES ARE AVAILABLE. IF EXCAVATION IS UNAVOIDABLE, THE PROJECT ARBORIST SHALL EVALUATE THE PROPOSED EXCAVATION TO DETERMINE METHODS TO MINIMIZE IMPACTS TO TREES. ROOT PRUNING SHALL BE DIRECTED AND DOCUMENTED BY THE PROJECT ARBORIST.
 7. LANDSCAPING. FOLLOWING CONSTRUCTION AND WHERE LANDSCAPING IS DESIRED, APPLY APPROXIMATELY 3-INCHES OF MULCH BENEATH THE DRIPLINE OF PROTECTED TREES IN A MINIMUM 5-FOOT RADIUS AROUND TREE TRUNKS; DO NOT PILE MULCH DIRECTLY AGAINST TREE TRUNKS. SHRUBS AND GROUND COVER PLANTS MAY BE PLANTED WITHIN THE GRASS-FREE MULCH RINGS. IF IRRIGATION IS USED, USE DRIP IRRIGATION OR LOW FLOW EMITTERS INSTALLED AT NATIVE GRADE (NO TRENCHING) ONLY BENEATH THE DRIPLINES OF PROTECTED TREES. LANDSCAPING SHALL BE PERFORMED BY HAND AND WITH HAND TOOLS ONLY BENEATH PROTECTED TREE DRIPLINES; ADJUST THE LOCATION OF PLANTS TO AVOID TREE ROOT IMPACTS.
 8. QUALITY ASSURANCE. A QUALIFIED ARBORIST SHOULD SUPERVISE PROPER EXECUTION OF THIS PLAN ON-CALL DURING CONSTRUCTION ACTIVITIES THAT COULD ENROACH ON RETAINED TREES. TREE PROTECTION SITE INSPECTION MONITORING REPORTS SHOULD BE PROVIDED TO THE CLIENT AND CITY FOLLOWING EACH SITE VISIT PERFORMED DURING CONSTRUCTION.
 9. REASSESSMENT. TREES THAT ARE RETAINED WITH SITE IMPROVEMENT WORK SHOULD BE REASSESSED IN TERMS OF FUTURE HOME PLANS; ADDITIONAL TREE REMOVAL OR ALTERNATIVE TREE PROTECTION MEASURES MAY BE NEEDED.

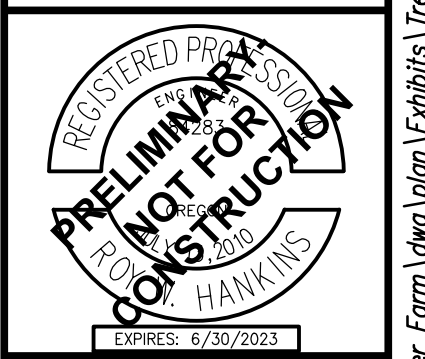
TREE PRESERVATION	
PROPOSED PLAN	NUMBER OF TREES
ONSITE TREES REMOVED	445
ONSITE SIGNIFICANT TREES REMOVED	15
ONSITE SIGNIFICANT TREES RETAINED	47
TOTAL TREES REMOVED	453
ONSITE TREES PRESERVED	363
TOTAL ONSITE TREES (INCLUDING SIGNIFICANT)	808
PERCENTAGE OF TREES PRESERVED	44.9%

4540 PRINGLE RD SE
 TAX MAP - 3000 & 3002
 TAX MAP - 083W11BC
 SW1/4 NW1/4 SEC11 T8S R3W W.M.
 SALEM, OREGON

**TREE PRESERVATION AND
 REMOVAL PLAN
 OVERVIEW**

REVISIONS	
NO.	DATE

EMERIO
 ENGINEERING • SURVEYING • DESIGN
 2687 WILLAMETTE ROAD, SUITE 1A
 EUGENE, OREGON 97401
 TEL: (603) 746-8812
 FAX: (603) 639-8592
 www.emeriodesign.com



FILE: P:\0742-003_Meyer_Form\dwg\plan\Exhibits\Tree Assessment\0742-003_P3.0rep_Plot Date: 2/2/2022 11:42 AM, by: Roy Hankins



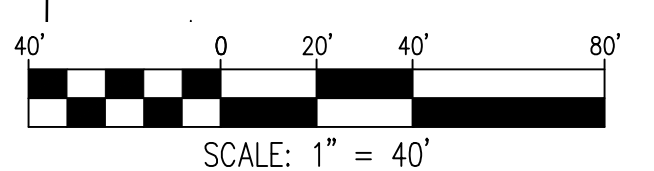
- TREE PROTECTION SPECIFICATIONS**
1. PRECONSTRUCTION CONFERENCE. PRIOR TO THE START OF CONSTRUCTION ACTIVITY, THE CONTRACTOR SHALL COORDINATE WITH THE PROJECT ARBORIST IN A TIMELY MANNER TO REVIEW THE TREE PROTECTION PLAN, VERIFY THAT TREES TO BE RETAINED ARE IDENTIFIED WITH NUMBERED TAGS ON THE GROUND, AND TO INSPECT AND VERIFY THE INSTALLATION OF TREE PROTECTION MEASURES.
 2. FENCING. TREES TO REMAIN ON SITE SHALL BE PROTECTED BY INSTALLATION OF TREE PROTECTION FENCING AS DEPICTED ON SITE PLANS IN ORDER TO PREVENT INJURY TO TREE TRUNKS OR ROOTS, OR SOIL COMPACTION WITHIN THE ROOT PROTECTION AREA. FENCES SHALL BE A MINIMUM 6'-FOOT HIGH 2"-INCH CHAIN LINK MESH SECURED TO METAL POSTS DRIVEN INTO THE GROUND. THE CONTRACTOR IS RESPONSIBLE FOR COORDINATING WITH THE PROJECT ARBORIST PRIOR TO OPENING, ADJUSTING OR REMOVING TREE PROTECTION FENCING.
 3. TREE PROTECTION ZONE. WITHOUT AUTHORIZATION FROM THE PROJECT ARBORIST, NONE OF THE FOLLOWING

- a) GRADE CHANGE OR CUT AND FILL;
 - b) NEW IMPERVIOUS SURFACES;
 - c) UTILITY OR DRAINAGE FIELD PLACEMENT;
 - d) STAGING OR STORAGE OF MATERIALS AND EQUIPMENT; OR
 - e) VEHICLE MANEUVERING.
- THE CONTRACTOR SHALL BE RESPONSIBLE FOR CONTACTING THE PROJECT ARBORIST IN A TIMELY MANNER PRIOR TO WORKING BENEATH PROTECTED TREE DRIFLINES. ROOT PROTECTION ZONES MAY BE ENTERED FOR TASKS LIKE SURVEYING, MEASURING AND SAMPLING. FENCES MUST BE CLOSED UPON COMPLETION OF THESE TASKS.

4. TREE AND STUMP REMOVAL. TREES TO BE REMOVED SHALL BE CLEARLY IDENTIFIED WITH TREE-MARKING PAINT OR OTHER METHODS APPROVED IN ADVANCE BY THE PROJECT ARBORIST. PROTECTION FENCING MAY BE TEMPORARILY OPENED IN TRACT B FOR REMOVAL OF TREES #6654 AND
5. PRUNING. PRUNING MAY BE NEEDED TO PROVIDE OVERHEAD CLEARANCE AND TO REMOVE DEAD AND DEFECTIVE BRANCHES FOR SAFETY. THE PROJECT ARBORIST CAN HELP BENEFIT WHERE PRUNING IS NECESSARY ONCE TREES RECOMMENDED FOR REMOVAL HAVE BEEN REMOVED AND THE SITE IS PREPARED FOR CONSTRUCTION. TREE REMOVAL AND PRUNING SHALL BE PERFORMED BY A QUALIFIED TREE SERVICE.

6. EXCAVATION AND ROOT PRUNING. EXCAVATION BENEATH PROTECTED TREE DRIFLINES SHALL BE AVOIDED IF ALTERNATIVES ARE AVAILABLE. IF EXCAVATION IS UNAVOIDABLE, THE PROJECT ARBORIST SHALL EVALUATE THE PROPOSED EXCAVATION TO DETERMINE METHODS TO MINIMIZE IMPACTS TO TREES. ROOT PRUNING SHALL BE DIRECTED AND DOCUMENTED BY THE PROJECT ARBORIST.
7. LANDSCAPING. FOLLOWING CONSTRUCTION AND WHERE LANDSCAPING IS DESIRED, APPLY APPROXIMATELY 3-INCHES OF MULCH BENEATH THE DRIFLINE OF PROTECTED TREES IN A MINIMUM 5'-FOOT RADIUS AROUND TREE TRUNKS; DO NOT FILE MULCH DIRECTLY AGAINST TREE TRUNKS. SHRUBS AND GROUND COVER PLANTS MAY BE PLANTED WITHIN THE GRASS-FREE MULCH RINGS. IF IRRIGATION IS USED, USE DRIP IRRIGATION OR LOW FLOW EMITTERS INSTALLED AT NATIVE GRADE (NO TRENCHING) ONLY BENEATH THE DRIFLINES OF PROTECTED TREES. LANDSCAPING SHALL BE PERFORMED BY HAND AND WITH HAND TOOLS ONLY BENEATH PROTECTED TREE DRIFLINES; ADJUST THE LOCATION OF PLANTS TO AVOID TREE ROOT IMPACTS.

8. QUALITY ASSURANCE. A QUALIFIED ARBORIST SHOULD SUPERVISE PROPER EXECUTION OF THIS PLAN ON-CALL DURING CONSTRUCTION ACTIVITIES THAT COULD ENCOMPASS OR RETAINED TREES. TREE PROTECTION SITE INSPECTION MONITORING REPORTS SHOULD BE PROVIDED TO THE CLIENT AND CITY FOLLOWING EACH SITE VISIT PERFORMED DURING CONSTRUCTION.
9. REASSESSMENT. TREES THAT ARE RETAINED WITH SITE IMPROVEMENT WORK SHOULD BE REASSESSED IN TERMS OF FUTURE HOME PLANS; ADDITIONAL TREE REMOVAL OR ALTERNATIVE TREE PROTECTION MEASURES MAY BE NEEDED.



LEGEND

- HISTORIC WHITE OAK TO REMAIN
- HISTORIC WHITE OAK TO BE REMOVED

TREE #	SPECIES	DBH*	REMOVE
1884	CEDAR	14	REMOVE
2000	OAK	16	REMOVE
2069	FIR	36	
2070	FIR	32	
2146	FIR	16	REMOVE
2169	BIRCH	12	
2177	BIRCH	14	
2178	FIR	22	
2256	PINE	10	
2325	FIR	12	
2392	FIR	30	
2439	OAK	12	
2440	FIR	16	
2449	ALDER	16	
2450	FIR	16	
2451	FIR	16	
2452	FIR	16	
2577	OAK	23	
2578	OAK	25	
2579	OAK	38	
3146	OAK (x2)	24+	REMOVE
3149	FIR	16	REMOVE
3151	OAK	14	REMOVE
3153	OAK (x2)	14	REMOVE
3154	OAK (x2)	18	REMOVE
3155	OAK	18	REMOVE
3157	OAK	18	REMOVE
3158	OAK	12	REMOVE
3159	OAK	10	REMOVE
3160	OAK	16	REMOVE
3161	OAK	12	REMOVE
3162	OAK (x3)	32	REMOVE
3163	OAK	23	REMOVE
3164	OAK (x2)	14	REMOVE
3165	OAK	12	REMOVE
3166	OAK	10	REMOVE
3167	OAK (x2)	14	REMOVE
3168	OAK (x2)	12	REMOVE
3169	OAK (x2)	10	REMOVE
3170	OAK	18	REMOVE
3171	OAK	10	REMOVE
3172	OAK	10	REMOVE
3173	OAK	10	REMOVE
3174	OAK	10	REMOVE
3176	OAK	12	REMOVE
3177	OAK	14	REMOVE
3178	OAK	16	REMOVE
3179	OAK (x2)	18	REMOVE
3180	OAK	12	REMOVE
3181	OAK (x2)	18	REMOVE
3182	OAK	18	REMOVE
3184	OAK	10	REMOVE
3188	OAK (x3)	12	REMOVE
3189	OAK	14	REMOVE
3190	OAK (x2)	10	REMOVE
3191	OAK	10	REMOVE
3192	OAK	14	REMOVE
3193	OAK (x3)	14	REMOVE
3194	OAK	27	REMOVE
3195	OAK (x2)	16	REMOVE
3196	OAK	14	REMOVE
3197	FIR	24	REMOVE
3198	OAK	12	REMOVE
3199	OAK	14	REMOVE
3200	OAK	10	REMOVE
3201	OAK	16	REMOVE
3202	OAK	12	REMOVE
3203	OAK	12	REMOVE
3204	OAK	14	REMOVE
3205	OAK	10	REMOVE
3206	OAK	14	REMOVE
3207	OAK	10	REMOVE
3208	OAK	14	REMOVE
3209	OAK	14	REMOVE
3210	OAK	12	REMOVE
3211	OAK	14	REMOVE
3212	OAK	12	REMOVE
3213	OAK	42	REMOVE
3214	OAK (x2)	16	REMOVE
3216	OAK	18	REMOVE
3217	OAK	30	REMOVE
3218	OAK	16	REMOVE
3219	OAK	10	REMOVE
3220	OAK	12	REMOVE
3221	OAK	16	REMOVE
3225	OAK	18	REMOVE

TREE #	SPECIES	DBH*	REMOVE
3226	OAK	12	REMOVE
3227	OAK (x2)	12	REMOVE
3228	OAK	34	REMOVE
3229	OAK	12	REMOVE
3230	OAK	10	REMOVE
3232	OAK	16	REMOVE
3233	OAK	12	REMOVE
3235	OAK (x2)	12	REMOVE
3238	OAK	16	REMOVE
3240	OAK	10	REMOVE
3241	OAK (x2)	16	REMOVE
3242	OAK (x3)	25	REMOVE
3243	OAK (x3)	24	REMOVE
3244	OAK (x5)	14	REMOVE
3245	OAK	14	REMOVE
3246	OAK (x2)	16	REMOVE
3247	OAK	25	REMOVE
3248	OAK	18	REMOVE
3249	OAK (x2)	12	REMOVE
3250	OAK	16	REMOVE
3251	OAK	29	REMOVE
3252	OAK	14	REMOVE
3254	OAK	10	REMOVE
3256	OAK	10	REMOVE
3259	OAK	12	REMOVE
3260	OAK	14	REMOVE
3261	OAK (x3)	12	REMOVE
3262	OAK	10	REMOVE
3263	OAK (x3)	10	REMOVE
3264	OAK	10	REMOVE
3265	OAK	16	REMOVE
3266	OAK	16	REMOVE
3267	OAK	10	REMOVE
3268	OAK	16	REMOVE
3269	OAK	10	REMOVE
3270	OAK	18	REMOVE
3271	OAK (x3)	12	REMOVE
3272	OAK (x2)	12	REMOVE
3273	OAK	18	REMOVE
3274	OAK	10	REMOVE
3275	OAK (x2)	18	REMOVE
3276	OAK	12	REMOVE
3277	OAK	27	REMOVE
3278	OAK	10	REMOVE
3280	OAK	18	REMOVE
3281	OAK (x2)	16	REMOVE
4466	OAK	33	REMOVE
4467	OAK	18	REMOVE
4468	OAK	31	REMOVE
4469	OAK	28	REMOVE
4470	OAK	29	REMOVE
4471	FIR	36	REMOVE
4472	OAK	29	REMOVE
4473	OAK	25	REMOVE
4474	OAK	14	REMOVE
4500	OAK	37	REMOVE
4565	OAK	18	REMOVE
4566	FIR	36	REMOVE
4567	OAK	14	REMOVE
4568	FIR	16	REMOVE
4569	OAK	25	REMOVE
4570	OAK	14	REMOVE
4571	OAK	25	REMOVE
4572	OAK	23	REMOVE
4573	OAK	18	REMOVE
4574	OAK	33	REMOVE
4575	OAK	25	REMOVE
4576	OAK	20	REMOVE
4577	OAK	12	REMOVE
4578	OAK	18	REMOVE
4579	OAK	14	REMOVE
4580	OAK	18	REMOVE
4581	OAK	14	REMOVE
4582	OAK	14	REMOVE
4583	OAK	12	REMOVE
4584	OAK	10	REMOVE
4585	OAK	12	REMOVE
4586	OAK	10	REMOVE
4587	OAK	12	REMOVE
4589	OAK (x2)	12	REMOVE
4590	OAK (x2)	16	REMOVE
4594	FIR	18	REMOVE
4595	FIR	18	REMOVE
4596	FIR	20	REMOVE
4597	FIR	22	REMOVE
4598	FIR	20	REMOVE
4599	FIR	18	REMOVE
4600	FIR	20	REMOVE

TREE #	SPECIES	DBH*	REMOVE

DBH* DIAMETER AT BREAST HEIGHT, INCHES.
INDICATES OFFSITE TREE OR TREE NOT LOCATED WITHIN PROJECT AREA. NOT INCLUDED IN TREE PRESERVATION COUNT.

4540 PRINGLE RD SE
TAX MAP - 3000 & 3002
TAX MAP - 083W11BC
SW1/4 NW1/4 SEC11 T8S R3W W.M.
SALEM, OREGON

TREE PRESERVATION AND
REMOVAL PLAN -
SOUTHWEST

REVISIONS	
NO.	DESCRIPTION

EMERIO
ENGINEERING - SURVEYING - DESIGN
2687 WILLAMETTE ROAD, SUITE 1A
EUGENE, OREGON 97401
TEL: (503) 746-8812
FAX: (503) 639-9592
www.emeriodesign.com



FILE-P:\0742-003_Meyer Form\dwg\plan\Exhibits\Tree Assessment\0742-003_P3.3.dwg Plot Date: 2/2/2022 12:47 PM, by: Roy Hankins

