

Legal Description for a 15.00-Foot Wide  
Public Sanitary Sewer Easement to the City of Salem  
as Shown on Partition Plat 2012-0012

Beginning at a point that lies North 00°19'27" West 7.50 feet from the most southerly southwest corner of Parcel 3 of Partition Plat 2012-0012, a Partition Plat of record located in the west half of Section 16, Township 7 South, Range 3 West of the Willamette Meridian, Polk County, City of Salem, Oregon as Polk County Survey File Number 15599, said point also being on the east line of that tract of land conveyed to Michael J and Janine A Kotek as recorded in Polk County deed records #2005-4825; thence North 00°19'27" West 15.00 feet along the common line to a point; thence South 89°31'09" East 319.39 feet to a point on the westerly Right-of-Way line of Linwood Street NW; thence along said Right-of-Way line along the arc of a 380.39 foot radius curve to the right 17.41 feet, the long chord of which bears South 30°58'08" West 17.41 feet, to a point; thence leaving said Right-of-Way line North 89°31'09" West 310.35 feet to the Point of Beginning. Containing 4,723 square feet more or less.

The Basis of bearings for the above-described property is based on Partition Plat 2012-0012, a Partition Plat of record as Polk County Survey File Number 15599.



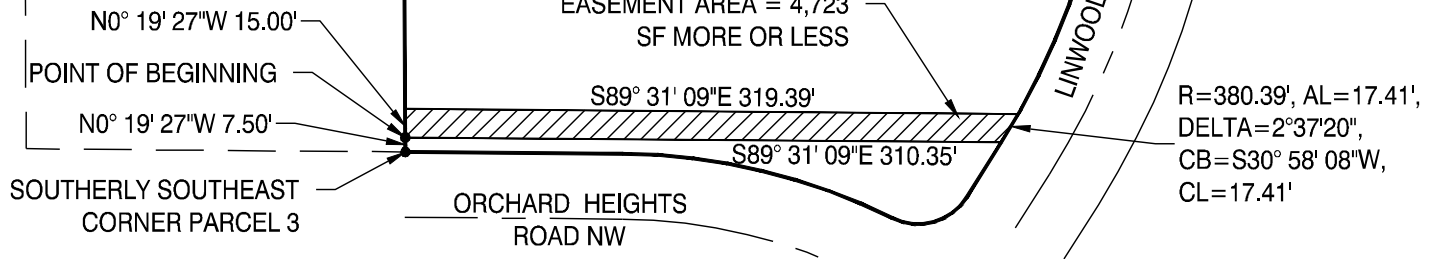
SKETCH OF A 15.00-FOOT-WIDE PUBLIC SANITARY SEWER EASEMENT  
 TO THE CITY OF SALEM AS SHOWN ON PARTITION PLAT 2012-0012  
 LOCATED IN THE WEST 1/2 OF SECTION 16, TOWNSHIP 7 SOUTH, RANGE 3 WEST OF THE  
 WILLAMETTE MERIDIAN, CITY OF SALEM, POLK COUNTY, OREGON

BASIS OF BEARINGS  
 PER PP 2012-0012  
 S67°29'56"E 180.96'

PARCEL 3  
 OF PARTITION PLAT  
 2012-0012  
 (CS 15599)

MICHAEL J  
 AND JANINE  
 A KOTEK  
 #2005-4825

SCALE 1"=100'



LEGEND:

- R RADIUS
- AL ARC LENGTH
- CB CHORD BEARING
- CL CHORD LENGTH
- CS POLK COUNTY SURVEY NUMBER
- SF SQUARE FOOT
- PP PARTITION PLAT

REGISTERED  
 PROFESSIONAL  
 LAND SURVEYOR

DIGITAL SIGNATURE  
*Scott A Ponder*

OREGON  
 JULY 12, 2021  
 SCOTT A PONDER  
 65/61

EXPIRES 12/31/24

THE BASIS OF BEARINGS FOR THE SKETCH ABOVE IS FROM PARTITION PLAT 2012-0012 (CS 15599),  
 A PARTITION PLAT OF RECORD IN POLK COUNTY, OREGON, AS SHOWN.